



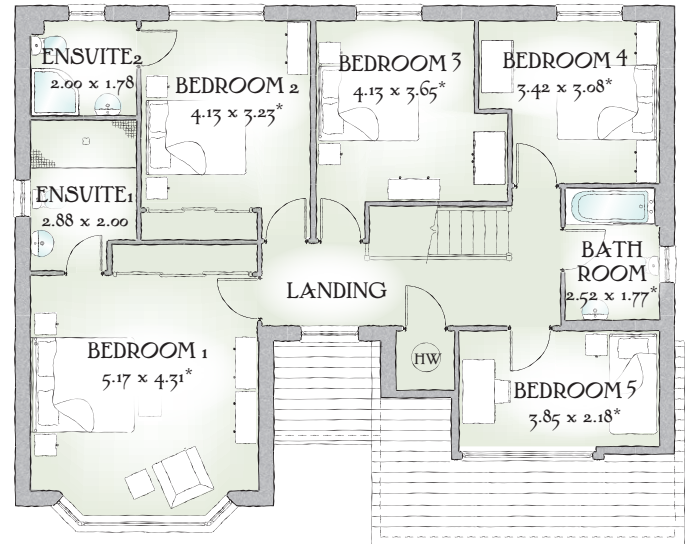
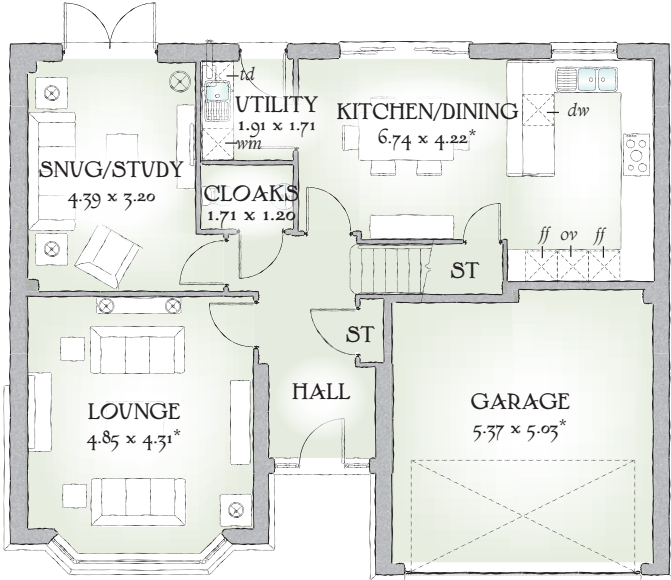
Marlborough

FIVE BEDROOM HOME





Marlborough



1906 SQ FT | FIVE BEDROOM HOME

An extensive executive home of real substance, The Marlborough creates a first impression that lasts, from its traditional wide bay windows to the spacious integral double garage and the stunning entrance in between.

GROUND FLOOR

Lounge	15'11" x 14'2"	4.85 x 4.31 m*
Kitchen/ Dining	22'1" x 13'10"	6.74 x 4.22 m*
Snug/Study	14'5" x 10'6"	4.39 x 3.20 m
Utility	6'3" x 5'7"	1.91 x 1.71 m
Cloaks	5'7" x 3'11"	1.71 x 1.20 m
Garage	17'7" x 16'6"	5.37 x 5.03 m*

FIRST FLOOR

Bedroom 1	17'0" x 14'2"	5.17 x 4.31 m*
En-suite 1	9'5" x 6'7"	2.88 x 2.00 m
Bedroom 2	13'7" x 10'7"	4.13 x 3.23 m*
En-suite 2	6'7" x 5'10"	2.00 x 1.78 m
Bedroom 3	13'7" x 12'0"	4.13 x 3.65 m*
Bedroom 4	11'3" x 10'1"	3.42 x 3.08 m*
Bedroom 5	12'8" x 7'2"	3.85 x 2.18 m*
Bathroom	8'3" x 5'10"	2.52 x 1.77 m*

Customers should note this illustration is an example of The Marlborough house type. All dimensions indicated are approximate and furniture layout is for illustrative purposes only. Homes may be a 'handed' (mirror image) versions of the illustrations, and may be detached, semi-detached or terraced. Materials used may differ from plot to plot including render and roof tile colours. Detailed plans and specifications are available for inspection for each plot at our Sales Centre during working hours and customers must check their individual specifications prior to making reservation.

KEY Hob Oven Fridge/freezer Dishwasher space Washing machine space Tumble dryer space Hot Water Cylinder

*Max dimensions Note: Bedroom dimensions taken into wardrobe recess. All wardrobes are subject to site specification. Please see Sales Consultant for further details.

Traditional homes, built the way you remember

