



# Marlow

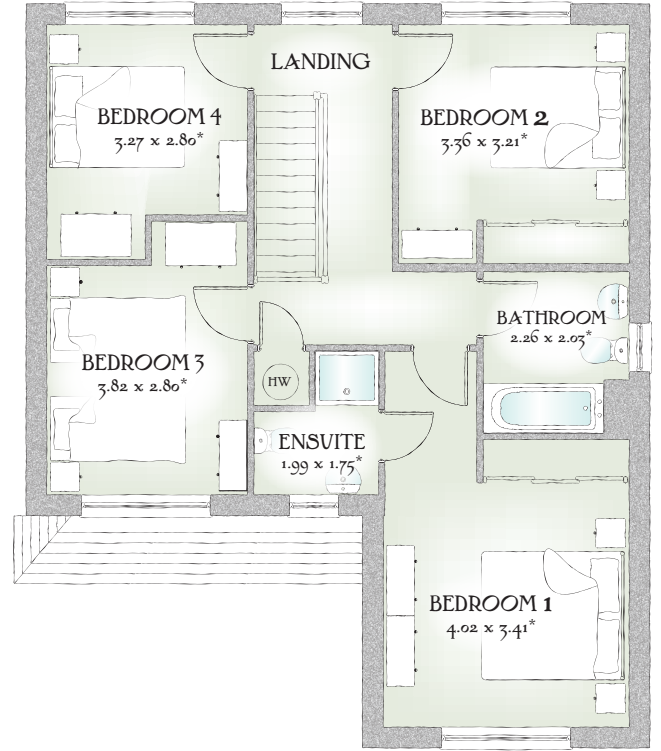
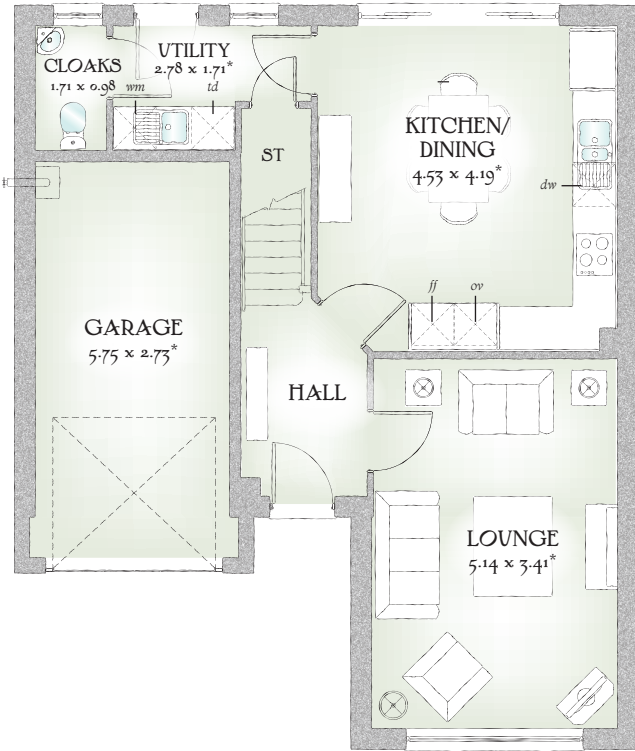
FOUR BEDROOM HOME



 REDROW



# Marlow



1259 SQ FT | FOUR BEDROOM HOME

This home has extensive living space that excels at every turn, from the pleasing proportions of every room to the excellent use of space, from the well thought out flow of life and light to the luxurious finishing touches.

## GROUND FLOOR

Lounge	16'10" x 11'2"	5.14 x 3.41 m*
Kitchen/ Dining	14'10" x 13'9"	4.53 x 4.19 m*
Utility	9'1" x 5'7"	2.78 x 1.71 m*
Cloaks	5'7" x 3'3"	1.71 x 0.98 m
Garage	18'10" x 8'11"	5.75 x 2.73 m*

## FIRST FLOOR

Bedroom 1	13'2" x 11'2"	4.02 x 3.41 m*
EnSuite 1	6'6" x 5'9"	1.99 x 1.75 m*
Bedroom 2	11'0" x 10'6"	3.36 x 3.21 m*
Bedroom 3	12'6" x 9'2"	3.82 x 2.80 m*
Bedroom 4	10'9" x 9'2"	3.27 x 2.80 m*
Bathroom	7'5" x 6'8"	2.26 x 2.03 m*

Customers should note this illustration is an example of The Marlow housetype. All dimensions indicated are approximate and furniture layout is for illustrative purposes only. Homes may be a 'handed' (mirror image) versions of the illustrations, and may be detached, semi-detached or terraced. Materials used may differ from plot to plot including render and roof tile colours. Detailed plans and specifications are available for inspection for each plot at our Marketing Suite during working hours and customers must check their individual specifications prior to making reservation.

KEY Hob Oven Fridge/freezer Washing machine space Dishwasher space Optional wardrobe Tumble dryer space Hot Water Cylinder  
\*Max dimensions Note: Bedroom dimensions taken into wardrobe recess

Traditional homes, built the way you remember

