

NORMANDE

PLOT 16

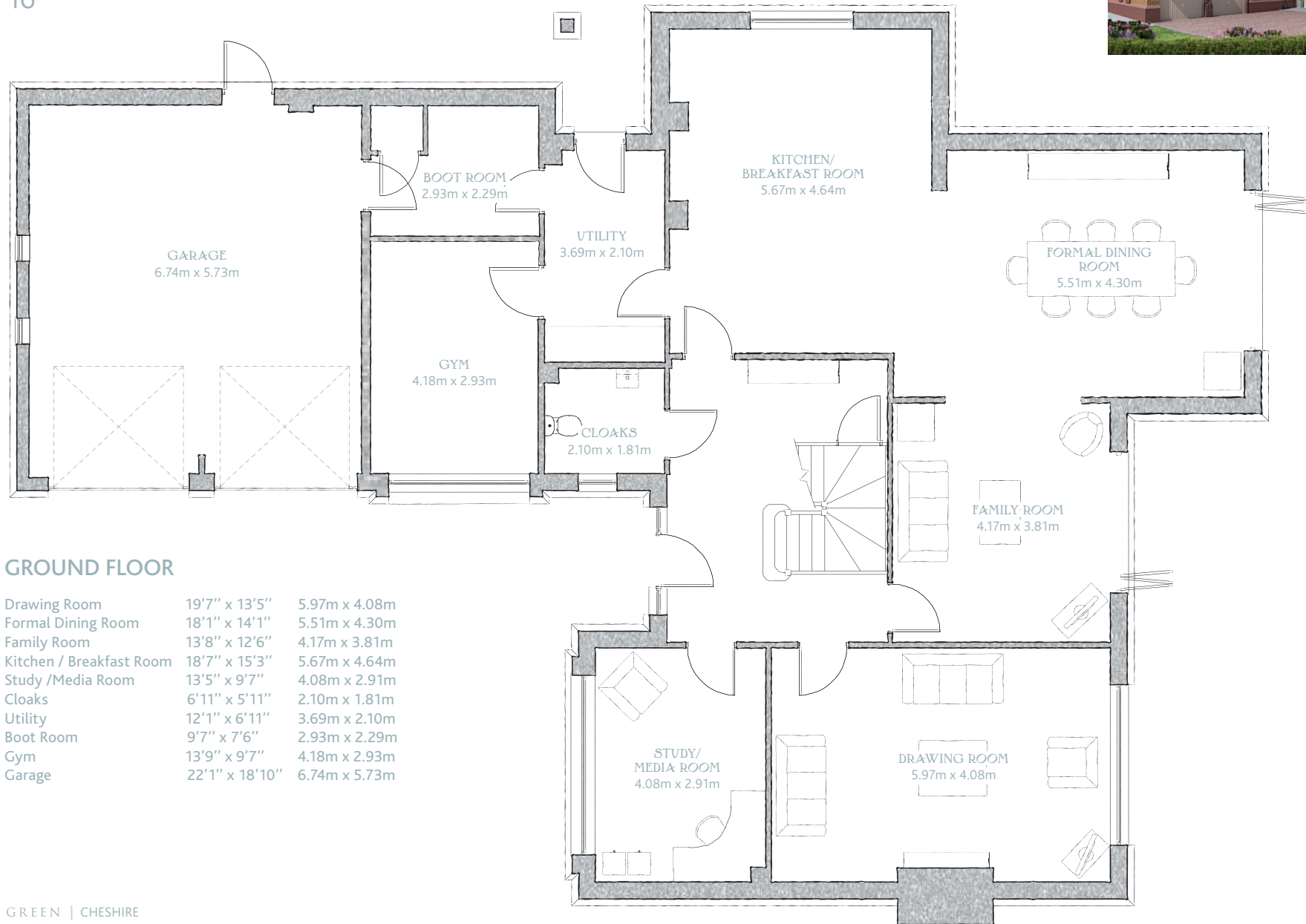
Normande is a beautiful five bedroom home overlooking the village green.



Customers please note the illustration and specification will vary from plot to plot, please speak to one of our sales consultants for detailed plans.

NORMANDE

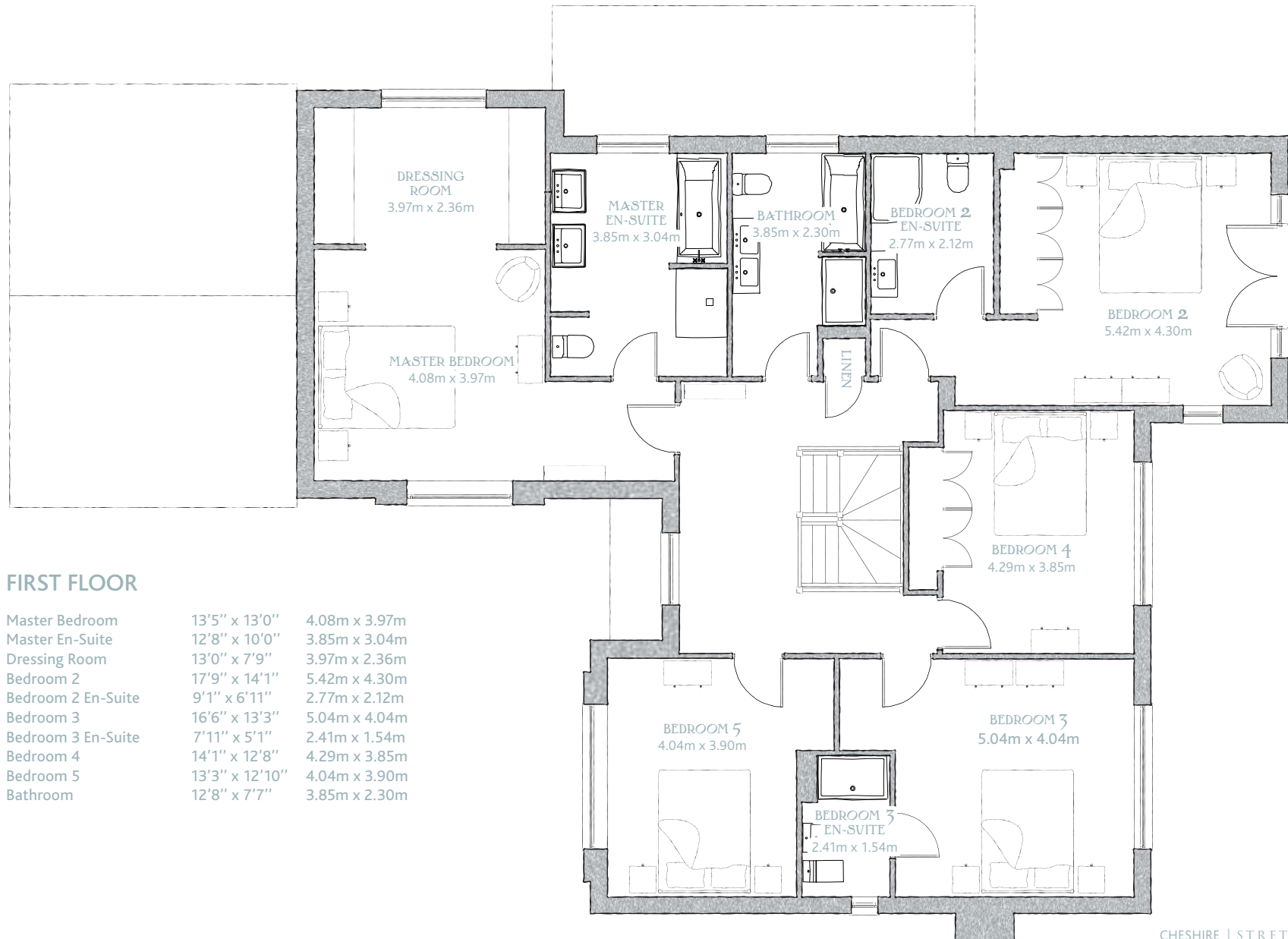
PLOT 16



GROUND FLOOR

Drawing Room	19'7" x 13'5"	5.97m x 4.08m
Formal Dining Room	18'1" x 14'1"	5.51m x 4.30m
Family Room	13'8" x 12'6"	4.17m x 3.81m
Kitchen / Breakfast Room	18'7" x 15'3"	5.67m x 4.64m
Study /Media Room	13'5" x 9'7"	4.08m x 2.91m
Cloaks	6'11" x 5'11"	2.10m x 1.81m
Utility	12'1" x 6'11"	3.69m x 2.10m
Boot Room	9'7" x 7'6"	2.93m x 2.29m
Gym	13'9" x 9'7"	4.18m x 2.93m
Garage	22'1" x 18'10"	6.74m x 5.73m

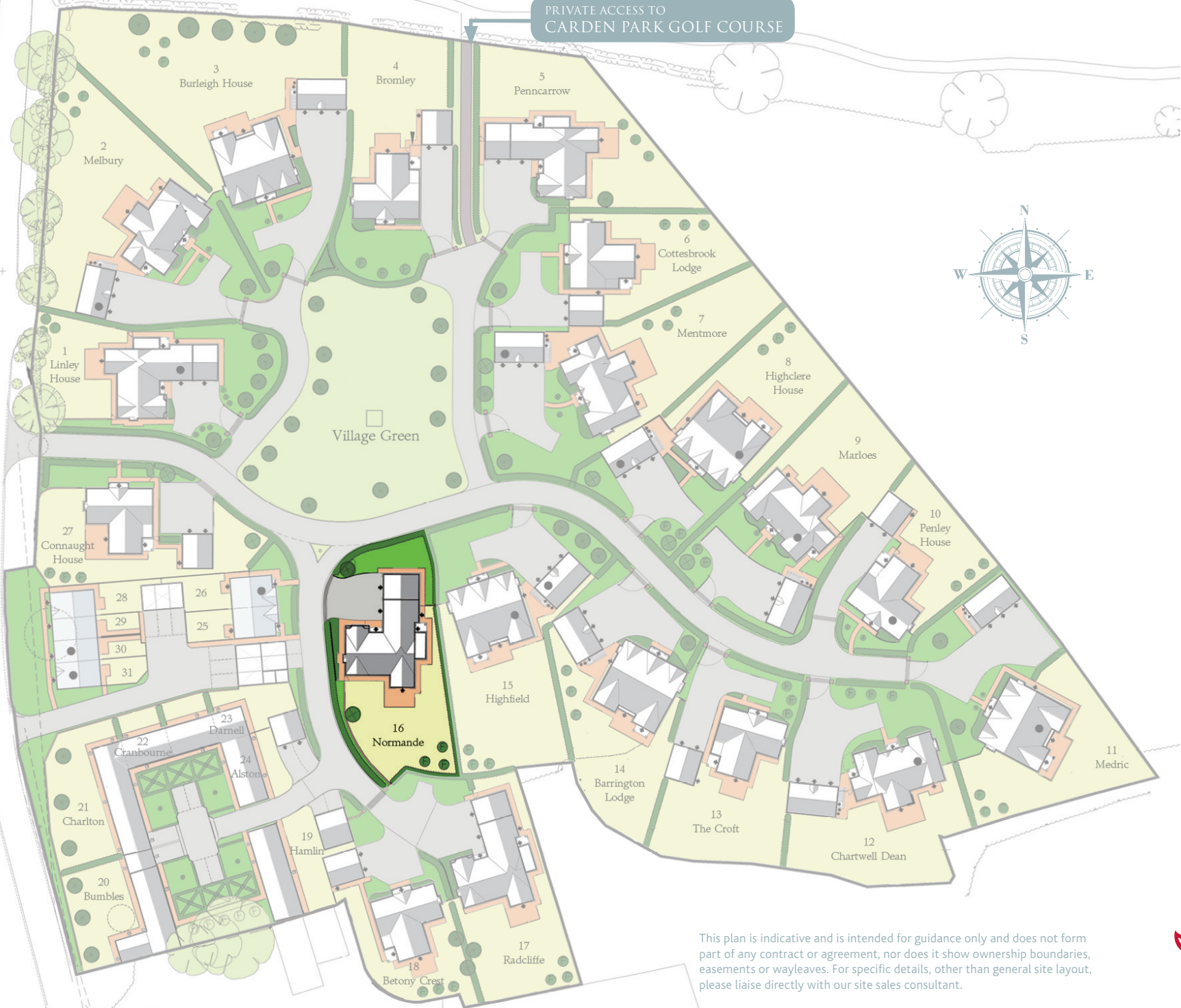
With an integral double garage, which opens into a boot room, perfect for day-to-day use by the family, the main entrance is through a generous hallway, off which are elegant formal reception rooms and a study/media room. The heart of the home is a superb kitchen/breakfast/family room, with bi-fold doors off to the terrace. Upstairs, the expansive master bedroom boasts a luxurious en-suite bathroom and dressing area, while the second and third bedrooms also have en-suite facilities and bedrooms 1, 2 and 4 have built-in wardrobes. Deep eaves, brick dentils and stone detailing and plinths create a prestigious impression from afar, while the varying roof heights add interest to the property.



FIRST FLOOR

Master Bedroom	13'5" x 13'0"	4.08m x 3.97m
Master En-Suite	12'8" x 10'0"	3.85m x 3.04m
Dressing Room	13'0" x 7'9"	3.97m x 2.36m
Bedroom 2	17'9" x 14'1"	5.42m x 4.30m
Bedroom 2 En-Suite	9'1" x 6'11"	2.77m x 2.12m
Bedroom 3	16'6" x 13'3"	5.04m x 4.04m
Bedroom 3 En-Suite	7'11" x 5'1"	2.41m x 1.54m
Bedroom 4	14'1" x 12'8"	4.29m x 3.85m
Bedroom 5	13'3" x 12'10"	4.04m x 3.90m
Bathroom	12'8" x 7'7"	3.85m x 2.30m

PRIVATE ACCESS TO
CARDEN PARK GOLF COURSE



This plan is indicative and is intended for guidance only and does not form part of any contract or agreement, nor does it show ownership boundaries, easements or wayleaves. For specific details, other than general site layout, please liaise directly with our site sales consultant.