

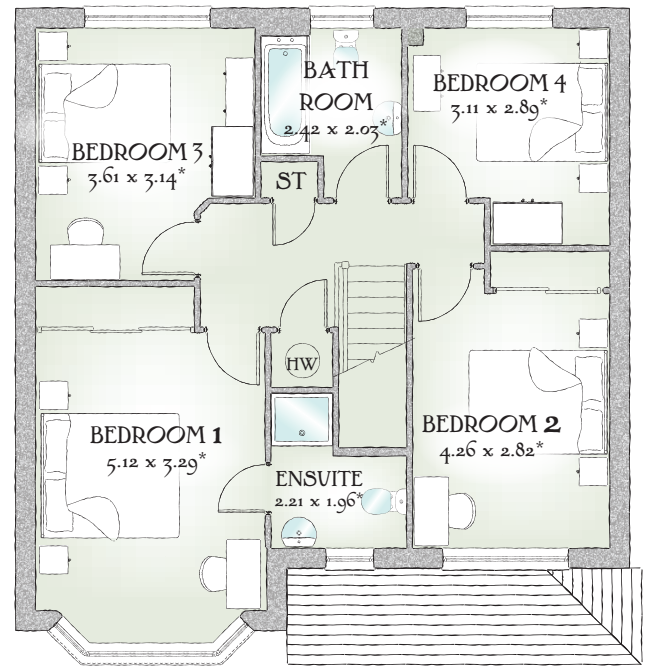
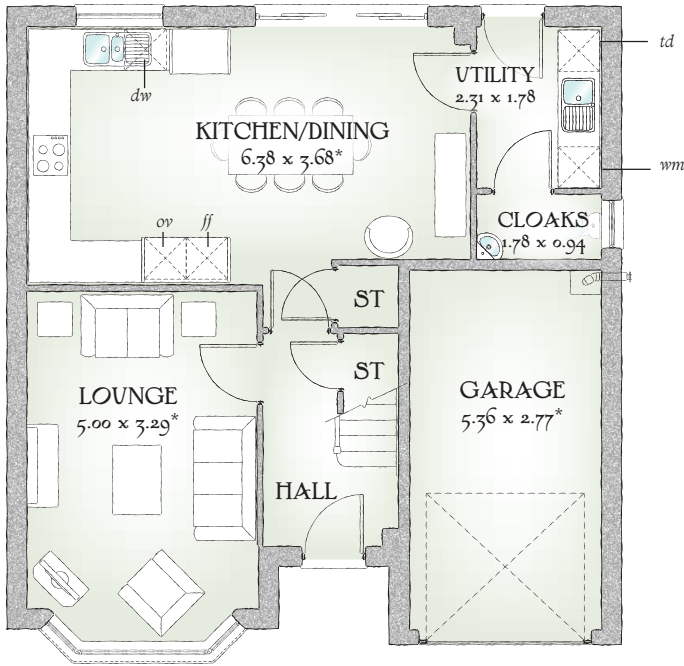


Oxford

FOUR BEDROOM HOME



 REDROW



1301 SQ FT | FOUR BEDROOM HOME

This is an excellent home of quality and character, built with pride to offer a solid foundation for family life. The Oxford's design captures the essence of traditional house building, including bay windows and a roofed porch.

GROUND FLOOR


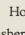
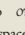
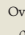
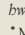
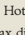
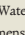
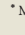
Lounge	16'5" x 10'10"	5.00 x 3.29 m*
Kitchen/ Dining	20'11" x 12'1"	6.38 x 3.68 m*
Utility	7'7" x 5'10"	2.31 x 1.78 m
Cloaks	5'10" x 3'1"	1.78 x 0.94 m
Garage	17'7" x 9'1"	5.36 x 2.77 m*

FIRST FLOOR

Bedroom 1	16'10" x 10'10"	5.12 x 3.29 m*
EnSuite	7'3" x 6'5"	2.21 x 1.96 m*
Bedroom 2	14'0" x 9'3"	4.26 x 2.82 m*
Bedroom 3	11'10" x 10'4"	3.61 x 3.14 m*
Bedroom 4	10'2" x 9'6"	3.11 x 2.89 m*
Bathroom	7'11" x 6'8"	2.42 x 2.03 m*

Customers should note this illustration is an example of The Oxford housetype. All dimensions indicated are approximate and the furniture layout is for illustrative purposes only. Homes may be 'handed' (mirror image) versions of the illustrations, and may be detached, semi-detached or terraced. Materials used may differ from plot to plot including render and roof tile colours. Detailed plans and specifications are available for inspection for each plot at our Marketing Suite during working hours and customers must check their individual specifications prior to making a reservation.

** All wardrobes are subject to site specification. Please see Sales Consultant for further details.

KEY  Hob  Oven  Fridge/freezer  Washing machine space  Dishwasher space  Optional wardrobe**  Tumble dryer space  Hot Water Cylinder

*Max dimensions Note: Bedroom dimensions taken into wardrobe recess

Traditional homes, built the way you remember