



Oxford

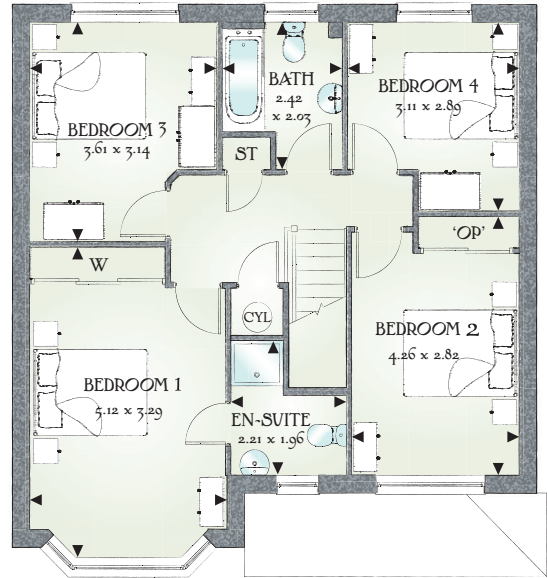
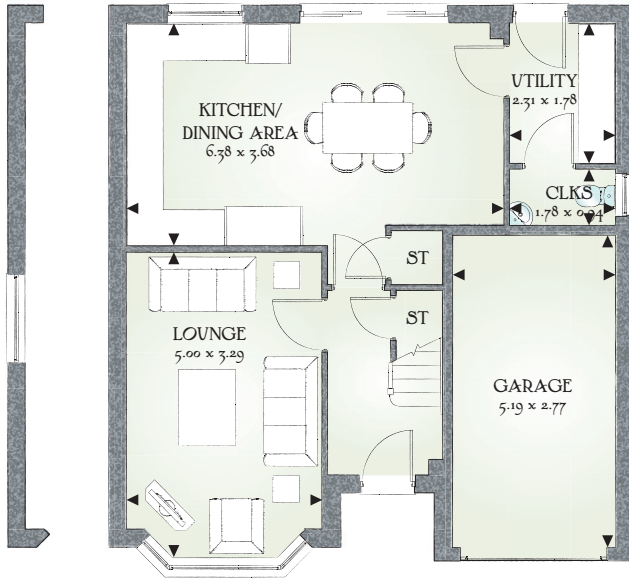
FOUR BEDROOM HOME



 REDROW



Oxford



Window to plots 234, 245 & 251 only

1300 SQ FT | FOUR BEDROOM HOME

This is an excellent home of quality and character, built with pride to offer a solid foundation for family life. The Oxford's design captures the essence of traditional house building, including bay windows and a roofed porch.

GROUND FLOOR

Kitchen/ Dining Area	6.38m x 3.68m	20'11" x 12'1"
Lounge	5.00m x 3.29m	16'5" x 10'10"
Cloaks	1.78m x 0.94m	5'10" x 3'1"
Utility	2.31m x 1.78m	7'7" x 5'10"
Garage	5.19m x 2.77m	17'0" x 9'1"

FIRST FLOOR

Bedroom 1	5.12m x 3.29m	16'10" x 10'10"
En-suite	2.21m x 1.96m	7'3" x 6'5"
Bedroom 2	4.26m x 2.82m	14'0" x 9'3"
Bedroom 3	3.61m x 3.14m	11'10" x 10'4"
Bedroom 4	3.11m x 2.89m	10'2" x 9'6"
Bathroom	2.42m x 2.03m	7'3" x 6'5"

Customers should note this illustration is an example of The Oxford housetype. All dimensions indicated are approximate and furniture layout is for illustrative purposes only. Homes may be a 'handed' (mirror image) versions of the illustrations. Materials used may differ from plot to plot including render and roof tile colours. Detailed plans and specifications are available for inspection for each plot at our Marketing Suite during working hours and customers must check their individual specifications prior to making reservation. 'OP' denotes optional.

Traditional homes built the way you remember

