



Shatterbury

FOUR BEDROOM HOME



 REDROW



Shaftebury

FOUR BEDROOM HOME



 REDROW



Shatterbury

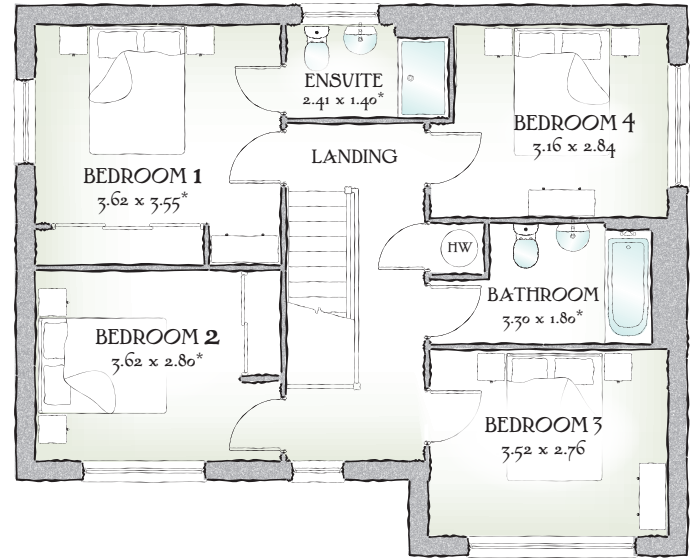
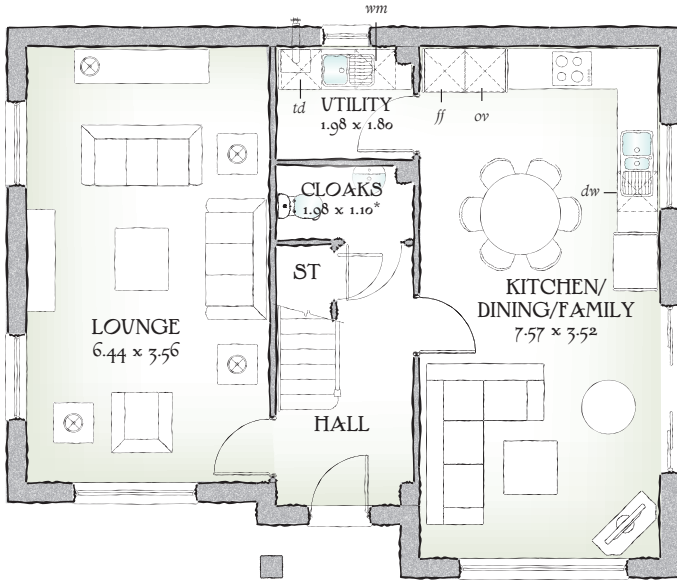
FOUR BEDROOM HOME



 REDROW



Shaftesbury



1410 SQ FT | FOUR BEDROOM HOME

The Shaftesbury is the epitome of Heritage Collection style, packed with Arts and Crafts architecture on the outside, and full of life and space inside, that's designed around the dynamics of modern family living.

GROUND FLOOR

Lounge	21'2" x 11'8"	6.44 x 3.56 m
Kitchen/ Dining/ Family	24'10" x 11'7"	7.57 x 3.52 m
Cloaks	6'6" x 3'7"	1.98 x 1.10 m*
Utility	6'6" x 5'11"	1.98 x 1.80 m

FIRST FLOOR

Bedroom 1	11'11" x 11'8"	3.62 x 3.55 m*
EnSuite	7'11" x 4'7"	2.41 x 1.40 m*
Bedroom 2	11'11" x 9'2"	3.62 x 2.80 m*
Bedroom 3	11'7" x 9'1"	3.52 x 2.76 m
Bedroom 4	10'4" x 9'4"	3.16 x 2.84 m
Bathroom	10'10" x 5'11"	3.30 x 1.80 m*

Customers should note this illustration is an example of The Shaftesbury housetype. All dimensions indicated are approximate and the furniture layout is for illustrative purposes only. Homes may be 'handed' (mirror image) versions of the illustrations, and may be detached, semi-detached or terraced. Materials used may differ from plot to plot including render and roof tile colours. Detailed plans and specifications are available for inspection for each plot at our Marketing Suite during working hours and customers must check their individual specifications prior to making a reservation.

** All wardrobes are subject to site specification. Please see Sales Consultant for further details.

KEY Hob ov Oven ff Fridge/freezer w/m Washing machine space dw Dishwasher space op Optional wardrobe** td Tumble dryer space bw Hot Water Cylinder

*Max dimensions Note: Bedroom dimensions taken into wardrobe recess

Traditional homes, built the way you remember

