



# Sunningdale

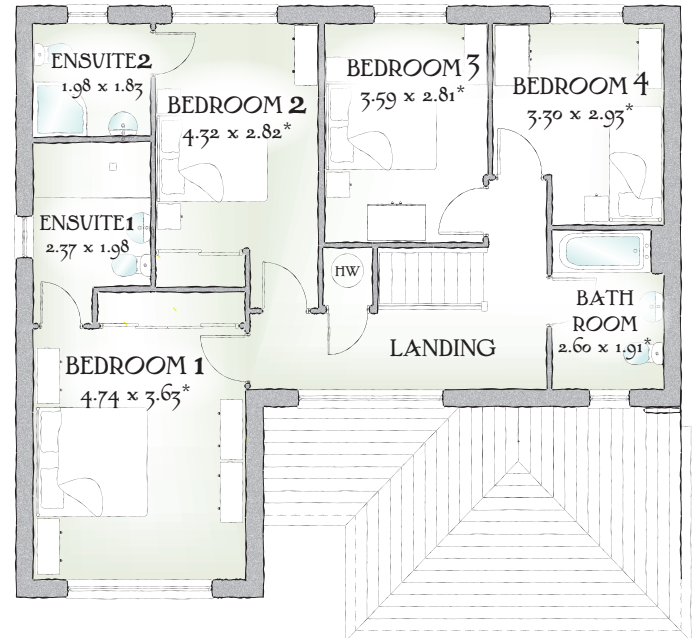
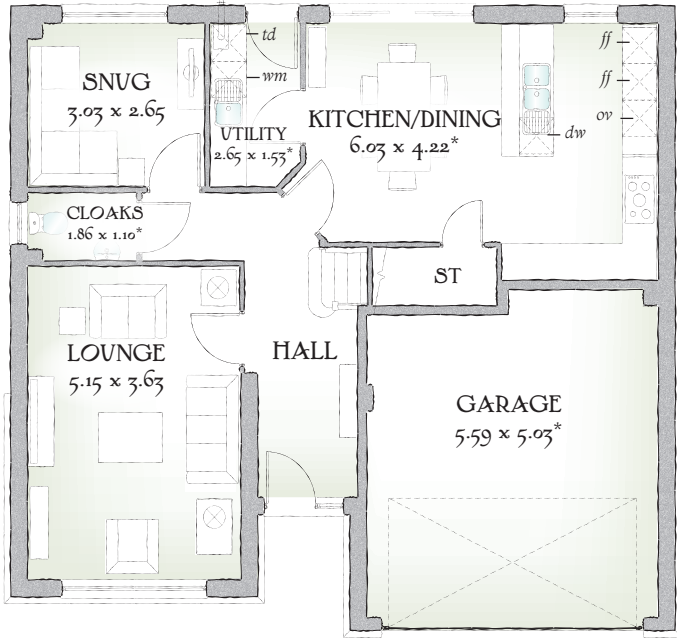
FOUR BEDROOM HOME



 REDROW



# Sunningdale



1619 SQ FT | FOUR BEDROOM HOME

Generously proportioned and superbly designed, The Sunningdale has the perfect balance of shared rooms and personal space that is essential as your family gets older and more independent.

## GROUND FLOOR

Lounge	16'11" x 11'11"	5.15 x 3.63 m
Kitchen/Dining	19'9" x 13'10"	6.03 x 4.22 m*
Utility	8'8" x 5'0"	2.65 x 1.53 m*
Snug	9'11" x 8'8"	3.03 x 2.65 m
Cloaks	6'1" x 3'7"	1.86 x 1.10 m*
Garage	18'4" x 16'6"	5.59 x 5.03 m*

## FIRST FLOOR

Bedroom 1	15'7" x 11'11"	4.74 x 3.63 m*
EnSuite 1	7'9" x 6'6"	2.37 x 1.98 m
Bedroom 2	14'2" x 9'3"	4.32 x 2.82 m*
EnSuite 2	6'6" x 6'0"	1.98 x 1.83 m
Bedroom 3	11'9" x 9'3"	3.59 x 2.81 m*
Bedroom 4	10'10" x 9'7"	3.30 x 2.93 m*
Bathroom	8'6" x 6'3"	2.60 x 1.91 m*

Customers should note this illustration is an example of The Sunningdale housetype. All dimensions indicated are approximate and the furniture layout is for illustrative purposes only. Homes may be 'handed' (mirror image) versions of the illustrations, and may be detached, semi-detached or terraced. Materials used may differ from plot to plot including render and roof tile colours. Detailed plans and specifications are available for inspection for each plot at our Marketing Suite during working hours and customers must check their individual specifications prior to making a reservation.

\*\* All wardrobes are subject to site specification. Please see Sales Consultant for further details.

KEY Hob Oven Fridge/freezer Washing machine space Dishwasher space Optional wardrobe\*\* Tumble dryer space Hot Water Cylinder

\* Max dimensions Note: Bedroom dimensions taken into wardrobe recess

Traditional homes, built the way you remember

