

# THE Worcester

1245 SQ FT - THREE BEDROOM HOME



**W**e understand how a little extra space can go a long way to enhancing your home, and so we've given this fabulous family home three generous double bedrooms, so everyone has the room they need.

# THE Worcester

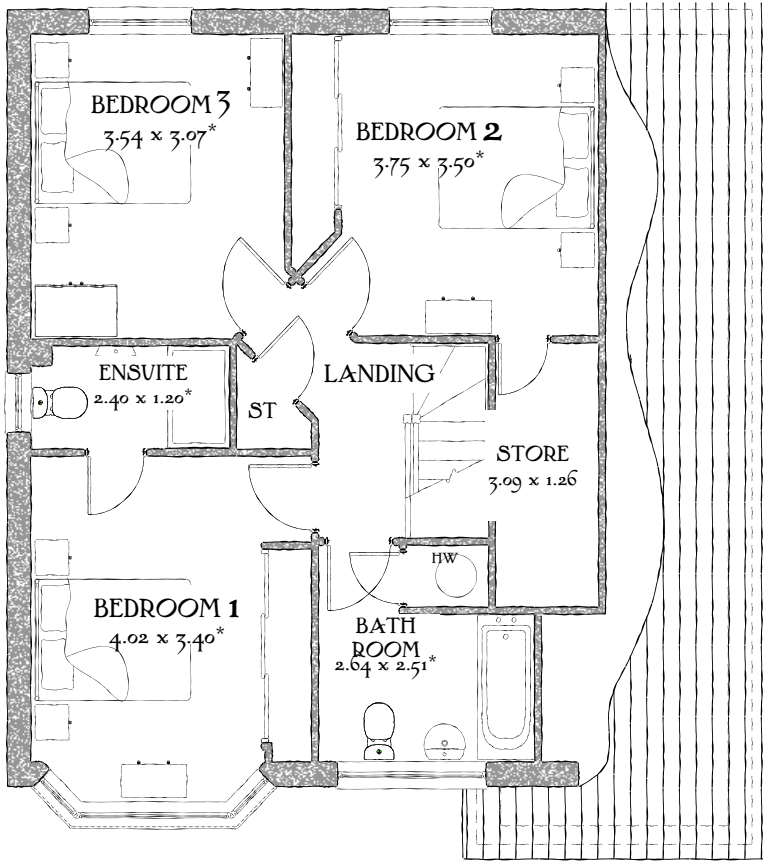
1245 SQ FT -  
THREE BEDROOM HOME

Reflecting the inspiration of the Arts and Crafts movement and driven by the desire to preserve individuality and craftsmanship.

The New Heritage Collection by Redrow, welcomes everyone in and leaves no-one out.

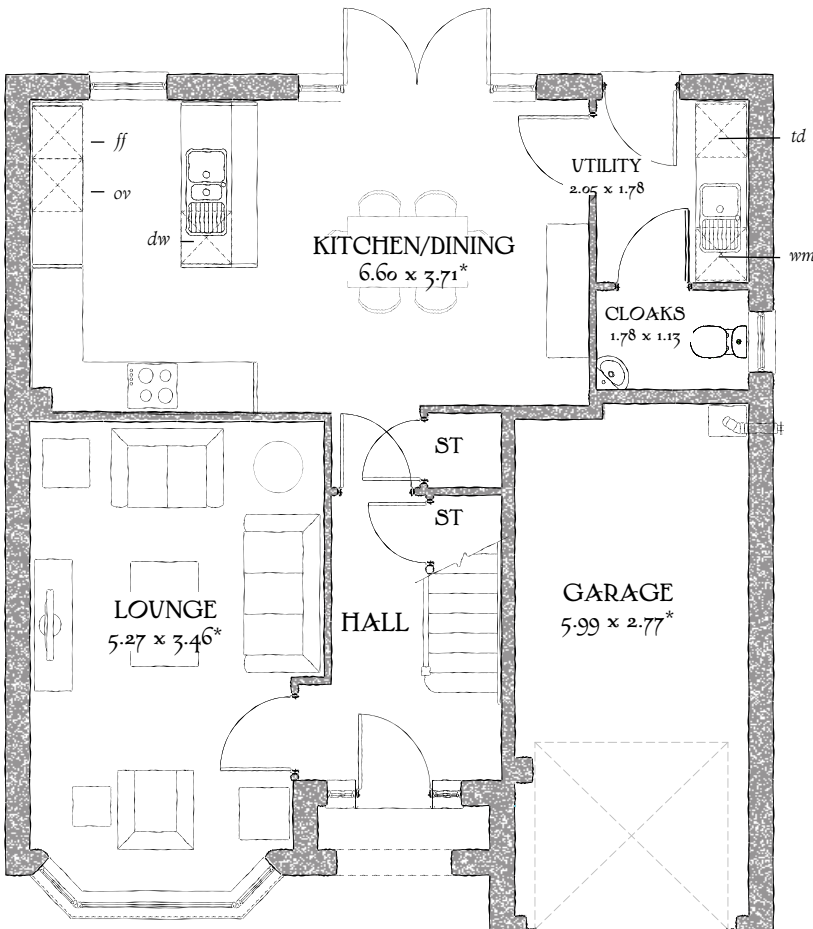
## FIRST FLOOR

Bedroom 1	13'2" x 11'2"	4.02 x 3.40 m*
EnSuite	7'10" x 3'11"	2.40 x 1.20 m*
Bedroom 2	12'4" x 11'6"	3.75 x 3.50 m*
Bedroom 3	11'7" x 10'1"	3.54 x 3.07 m*
Bathroom	8'8" x 8'3"	2.64 x 2.51 m*
Store	10'2" x 4'2"	3.09 x 1.26 m



## GROUND FLOOR

Lounge	16'7" x 11'4"	5.27 x 3.46 m*
Kitchen/ Dining	21'8" x 12'2"	6.60 x 3.71 m*
Utility	6'9" x 5'10"	2.05 x 1.78 m
Cloaks	5'10" x 3'8"	1.78 x 1.13 m
Garage	19'8" x 9'1"	5.99 x 2.77 m*



Customers should note this illustration is an example of The Worcester housetype. All dimensions indicated are approximate and furniture layout is for illustrative purposes only. Homes may be a 'handed' (mirror image) versions of the illustrations, and may be detached, semi-detached or terraced. Materials used may differ from plot to plot including render and roof tile colours. Detailed plans and specifications are available for inspection for each plot at our Marketing Suite during working hours and customers must check their individual specifications prior to making reservation.

USP: 19419. WE3H118-1

### KEY

Hob Oven Fridge/freezer Dishwasher space  
 Washing machine Tumble dryer space Optional wardrobe  
 Hot Water Cylinder

\*Max dimensions Note: Bedroom dimensions taken into wardrobe recess

Traditional homes, built the way you remember

