



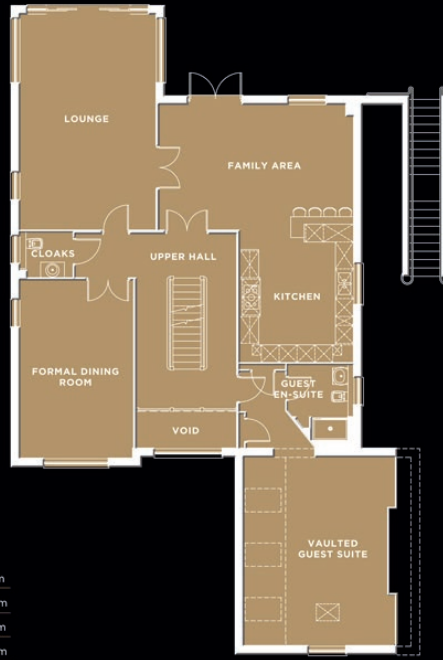
THE VILLAS  
LYTHAM QUAYS

## WHITE HORSES



### GROUND FLOOR

	FEET	METRES
PLANT/LAUNDRY	9'0" x 7'4"	2.74 x 2.24m
SHOWER	9'0" x 7'8"	2.74 x 2.33m
OFFICE/CINEMA/GYM	21'9" x 12'4"	6.63 x 3.77m
TEENAGER SUITE	15'2" x 12'4"	4.63 x 3.77m
TEENAGER EN-SUITE	4'10" x 12'4"	1.47 x 3.77m
STUDY/SNUG	14'2" x 12'4"	4.31 x 3.77m
DOUBLE GARAGE	20'10" x 18'4"	6.34 x 5.59m



### FIRST FLOOR

	FEET	METRES
LOUNGE	23'7" x 14'10"	7.19 x 4.52m
KITCHEN	14'6" x 12'4"	4.42 x 3.77m
FAMILY AREA	13'9" x 21'3"	4.18 x 6.48m
FORMAL DINING ROOM	19'6" x 12'4"	5.96 x 3.77m
GUEST EN-SUITE	8'4" x 7'1"	2.54 x 2.17m
VAULTED GUEST SUITE	20'8" x 16'6"	6.29 x 5.04m
CLOAKS	4'11" x 5'9"	1.51 x 1.75m



### SECOND FLOOR

	FEET	METRES
EXTERNAL BALCONY	14'12" x 8'12"	4.57 x 2.74m
MASTER BED	14'8" x 13'1"	4.47 x 3.99m
MASTER LOUNGE	13'1" x 11'9"	3.99 x 3.59m
EN-SUITE 1	13'1" x 9'2"	3.99 x 2.80m
WALK-IN WARDROBE 1	10'0" x 6'6"	3.05 x 1.99m
BEDROOM 2/LOUNGE	23'9" x 13'4"	7.24 x 4.08m
EN-SUITE 2	10'0" x 5'7"	3.05 x 1.70m
WALK-IN WARDROBE 2	10'0" x 6'6"	3.05 x 1.99m
BEDROOM 3	14'6" x 12'4"	4.41 x 3.77m
EN-SUITE 3	10'0" x 5'7"	3.05 x 1.70m