

 **BLAKE  
TOWER**

**FLOORPLANS**

 **REDROW**  
A BETTER WAY TO LIVE

# BLAKE TOWER: THE FLOORPLANS.

---

**BLAKE TOWER**

The Building	4
The View	6

---

**THE BARBICAN**

The Barbican Estate	8
Barbican Estate Map	10

---

**THE INTERIORS**

Overview	12
Conran and Partners	14
Specification	24

---

---

**THE FLOORPLANS**

Lower Ground 2	28
Lower Ground 1	30
Ground	32
Floor 01	34
Floor 02	36
Floor 03	38
Floors 04-07	40
Floors 08-10, 12 & 13	42
Floor 11	44
Floors 14-15	46

---

# MID-CENTURY BRUTALISM REIMAGINED.



Computer enhanced image

# THE FOURTH TOWER.

Built by architects Chamberlin, Powell and Bon in 1968, Blake Tower strikes an unmistakable silhouette on the Barbican Estate.

Redrow is breathing new life into the raw concrete walls of this mid-century icon. Blake Tower boasts the first new homes to be built in the Barbican for decades - 74 sleek, contemporary apartments created in partnership with legendary design house Conran and Partners.

This new benchmark in City living will bring with it a new residential population, and a new sense of life and purpose for the Square Mile's most iconic estate.

*YOUR OWN LONDON,  
STORIED,  
SOPHISTICATED  
AND SUBLIME.*

The view from the 16th floor  
of Blake Tower

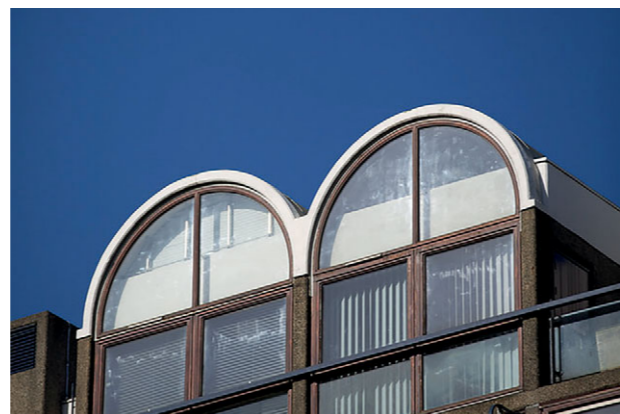


# THE CITY WITHIN A CITY.

The Barbican is unlike any other post-war development in England. Free from the financial and architectural restraint that defined its peers, the Barbican's sprawling, sculpted concrete covers 35 acres of Central London, took over 30 years to complete, and was declared "a wonder of the modern world" by the Queen of England.

This iconic estate changed the face of the City forever, but this neighbourhood has been the haunt of creatives and non-conformists for centuries. Once home to the likes of Milton and Shakespeare, the Barbican is still renowned as a centre for innovation and creativity.

Set in the midst of this unique development, Grade II listed Blake Tower reimagines Barbican living for the discerning contemporary Londoner in a collection of historically aware, robustly crafted, welcoming and beautiful homes.



The Barbican's seemingly radical architecture is designed to reference London's historical forms, including the raised viewing terraces, historic mews and garden square.



The Barbican's hand-finished exterior is a variation of *béton brut* – the raw concrete popularised by Le Corbusier in his *Unité d'habitation* in Marseilles.



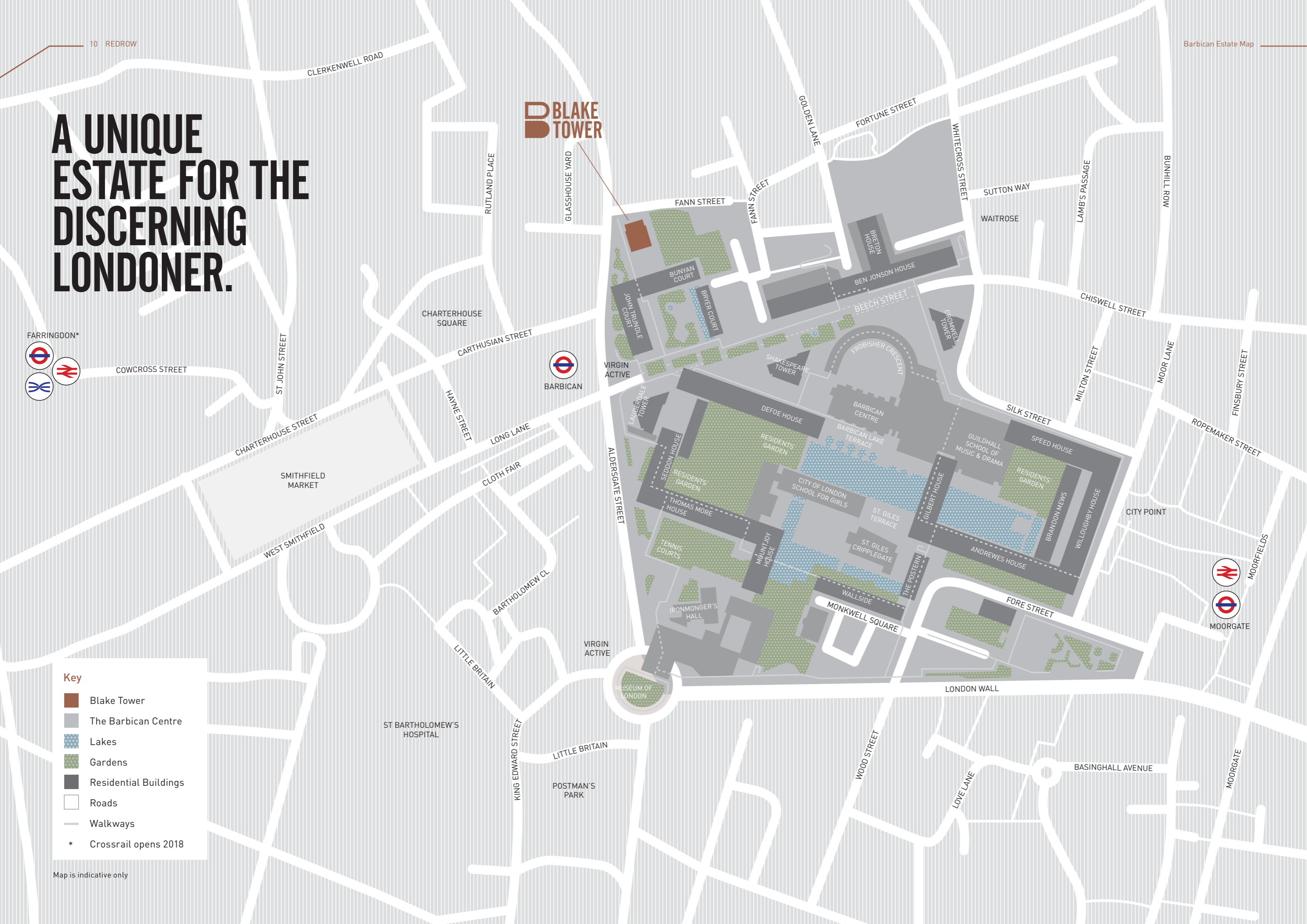
The Barbican was intended as a "wholly urban" alternative to suburban post-war innovations such as the garden city and new town movements.

# A UNIQUE ESTATE FOR THE DISCERNING LONDONER.



- Key**
- Blake Tower
  - The Barbican Centre
  - Lakes
  - Gardens
  - Residential Buildings
  - Roads
  - Walkways
  - \* Crossrail opens 2018

Map is indicative only

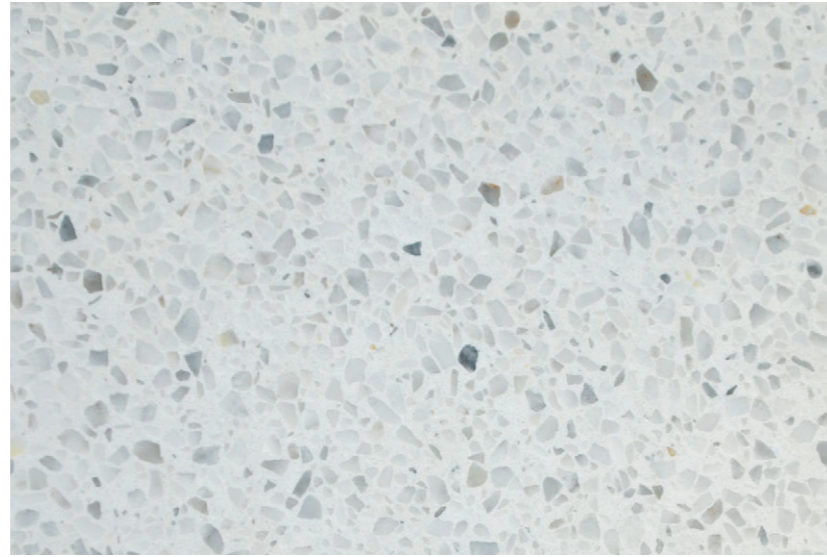


# INTERIORS TO UPHOLD HISTORY.

Blake Tower's collection of apartments is designed to speak the Barbican's language. These are beautiful, functional apartments with a keen awareness of their historical importance and a luxurious, modern specification.

These landmark new Barbican residences share the same eye for detail as the estate's mid-century apartments – it's there in the concrete reveals and brass panelling of the landings, and in the clean interior lines of polished plaster and timber. This is matched by a cutting-edge specification, with innovative, integrated lighting, custom tiling and impeccable finishes giving the apartments a crisp and modern aesthetic that is all their own.





Terrazzo sourced from Italy will become a defining and beautiful feature of Blake Tower.

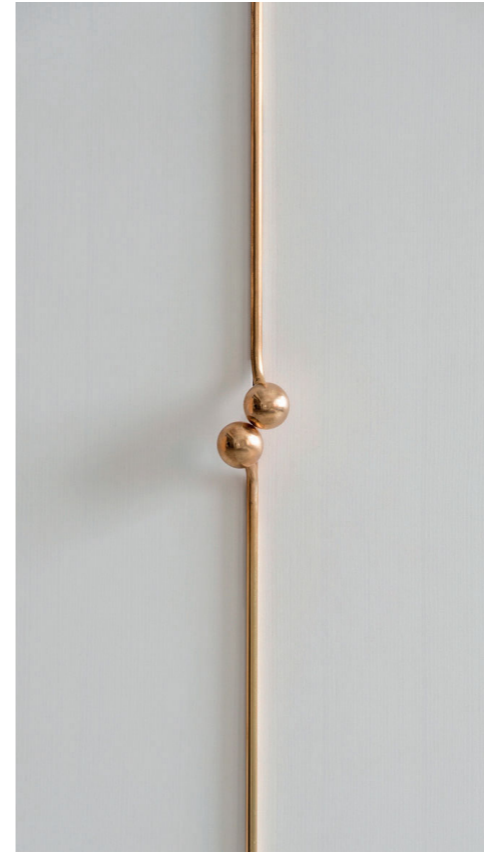
# DETAILS BY CONRAN AND PARTNERS.

Boasting some of the City's most recognisable architecture, Blake Tower needed interiors that could live up to their iconic setting. That's why Redrow chose to work with Conran and Partners.

A benchmark for excellence in British architecture and interiors for over 30 years, Conran and Partners have a proven track record for reinventing prestigious London spaces. They're raising the bar again with their work on the Blake Tower, demonstrating their expertise with superior attention to detail and carefully considered high specification.

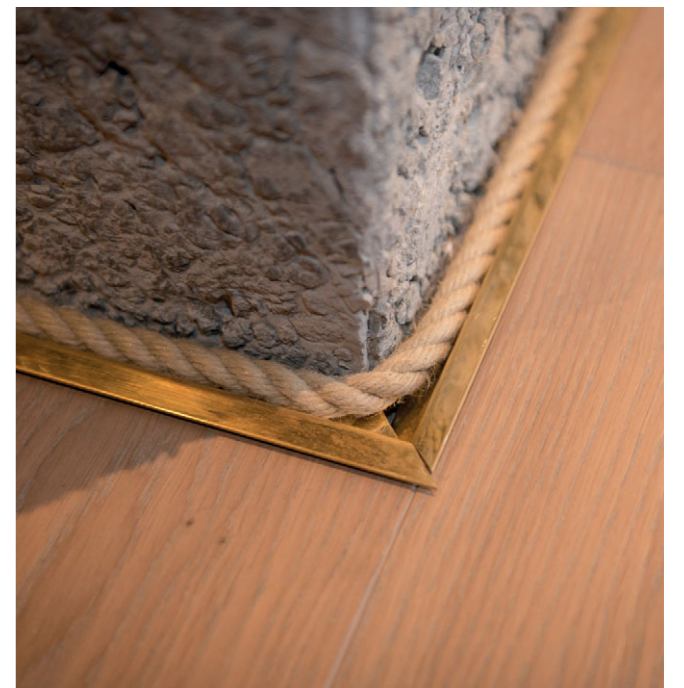


Discover custom-designed brass door levers and integrated brass joinery handles throughout.



Using terrazzo sourced from Italy, the hand-carved vanity basins feature a hand-finished curve derived from forms found within the Barbican.

Many apartments benefit from exposed original concrete walls, with a rope junction between the concrete and the timber flooring.





Photography of Blake Tower show apartment

*CONTEMPORARY  
BRUTALISM – RAW  
AND GEOMETRIC,  
YET DELICATE  
AND REFINED.*





Photography of Blake Tower show apartment



Photography of Blake Tower show apartment

Utilising the original listed fenestration, bedrooms are orientated to maximise natural light and best highlight the strong geometries intended by Chamberlin, Powell and Bon.



# SPECIFICATION.

## GENERAL

- Stained oak finish apartment entrance and internal doors
- Satin brass finished door furniture
- Matt paint finish to the walls
- Exposed concrete feature wall to the hallway (where indicated)
- New aluminium frame double glazed windows, in keeping with the style of the original windows
- Coat closet fitted with hanging rail, shelf and drawers (where indicated)
- Fitted soft close wardrobe with shelf, hanging rail and drawers to the master bedroom
- Window seat to the master bedroom (where indicated)
- Built in feature recess above the bed (where indicated)
- 'A' rated appliances throughout
- All apartments covered by a 10 year building warranty provided by LABC

## KITCHEN

- Fully fitted contemporary kitchen units with soft close mechanism to doors and drawers
- LED under pelmet lighting to the wall units
- Terazzo worktop and splash backs
- Terazzo sink with brass finished mixer tap
- Instant hot water tap
- Integrated appliances including a double oven (2 & 3 beds only), fridge/freezer, dishwasher & microwave
- Induction hob
- Built in extractor unit
- Freestanding washer/dryer to the hall cupboard or utility space (as shown on the plans)

## BATHROOM & ENSUITES

- White sanitaryware with a shower screen to the bath
- Brass Crosswater brassware
- Shower enclosure with Terrazzo tiled floor & glass door, to the bathroom and ensuite (only where indicated)
- Full height ceramic wall tiling to the bathroom and ensuite
- Terazzo basin and splashback
- Shaver socket to bathroom and ensuite
- Mirrored cabinet above the basin in the bathroom and ensuite

## ELECTRICAL

- Wired to receive HD television and Sky Plus to the living room and all bedrooms
- All apartments will be wired to receive Fibre Optic broadband (subject to subscription)
- Telephone and data points to living area and all bedrooms
- Mains operated smoke and heat detectors with battery backup
- White downlighters throughout, with dimmer switches to the living room
- Feature pendant lighting point either side of the bed in the master bedroom

## SECURITY

- Door entry system with colour audio visual display screen
- Proximity access system to enter the building
- CCTV covering all entrances & exits to the buildings, including bin and cycle store areas, linked back to the concierge/management suite

## HEATING

- Wet underfloor heating with individual room thermostats
- Individually controlled heating systems to each apartment
- Electric heated towel rail to the bathroom and ensuite

## FLOORING

- 200mm wide engineered oak, UV oil treated, flooring to all areas (except bedrooms & wet areas)
- Carpet to the bedrooms
- Terrazzo tiling to the bathroom and ensuite
- Terrazzo feature tiling in the kitchen (subject to kitchen layout)

## BARBICAN AMENITIES\*

- Underground parking available to rent on short or long-term basis
- Limited number of onsite storage spaces available
- Access to the Barbican Residents' Association
- Barbican Playgroup/ Parents and Toddlers onsite
- Bicycle storage
- Use of communal gardens incorporating 2 children's playgrounds (residents only)
- On-site organic food shop
- Hairdresser
- Residents' Tennis club
- Lakeside restaurants and café
- Arts centre
- Library
- Art gallery
- 3 cinema screens
- Zipcar



# PRIVATE SPACES COCOONED BY CONCRETE.



Computer generated image,  
Interior detail at Blake Tower

# FLOOR: LOWER GROUND 2

**APARTMENT  
LG21** **1 BEDROOM**

**TOTAL AREA**  
87.9 sq m | 946.2 sq ft

**LIVING/DINING/KITCHEN**  
6150mm x 6580mm | 20'2" x 21'7"

**BEDROOM**  
6575mm x 4150mm | 21'6" x 13'7"

**WINTER GARDEN**  
2225mm x 2545mm | 7'3" x 8'4"

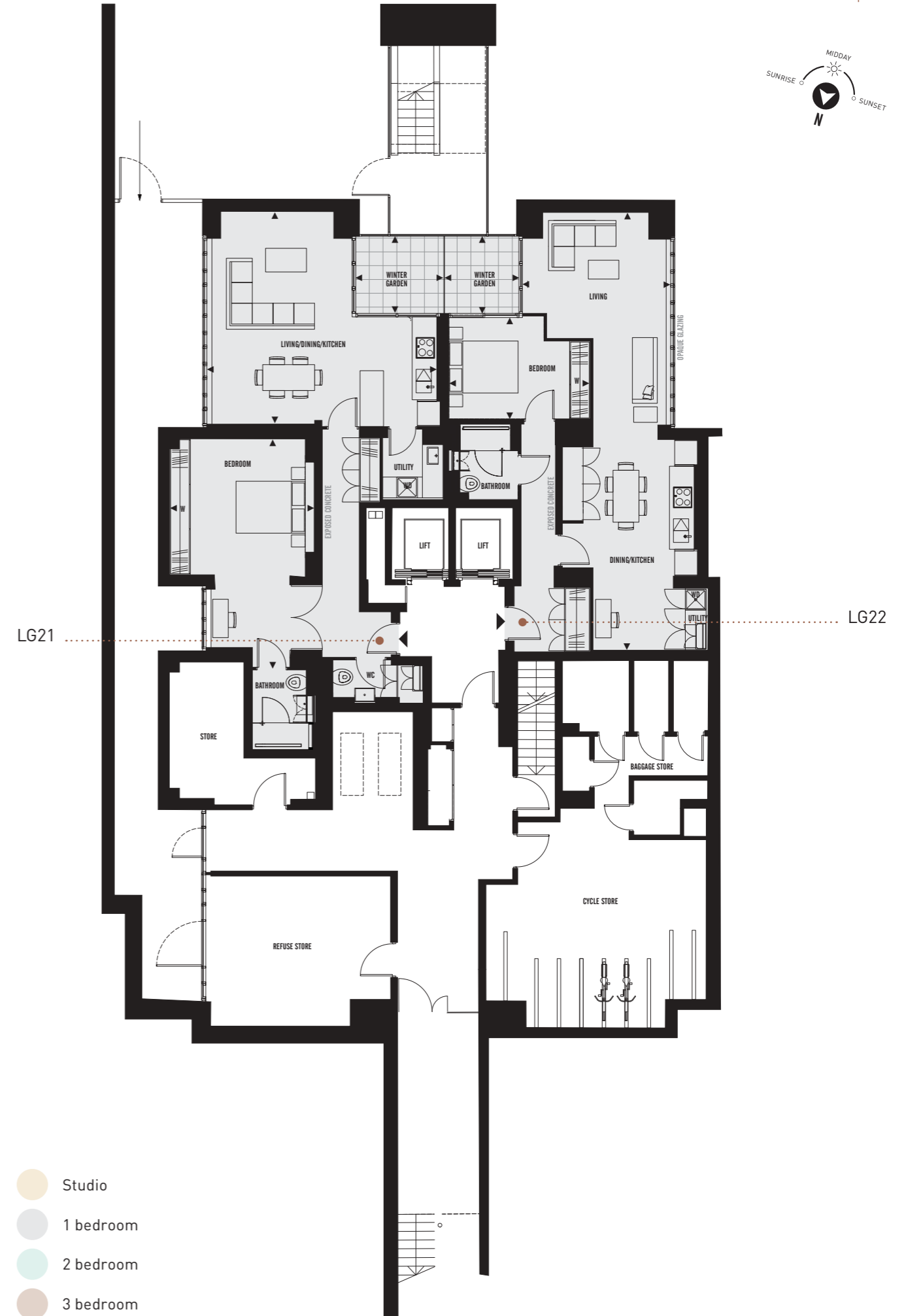
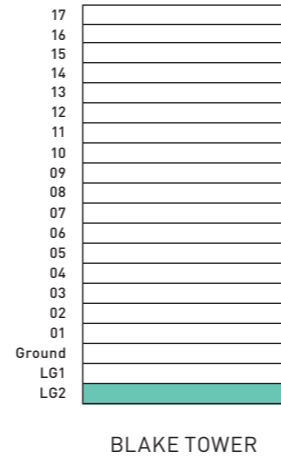
**APARTMENT  
LG22** **1 BEDROOM**

**TOTAL AREA**  
77.3 sq m | 832.1 sq ft

**LIVING/DINING/KITCHEN**  
12655mm x 4285mm | 41'6" x 14'0"

**BEDROOM**  
4065mm x 2930mm | 13'4" x 9'7"

**WINTER GARDEN**  
2280mm x 2140mm | 7'5" x 7'0"





# FLOOR: LOWER GROUND 1

**APARTMENT  
LG11** **1 BEDROOM**

**TOTAL AREA**  
60.5 sq m | 651.2 sq ft

**LIVING/DINING/KITCHEN**  
5305mm x 5300mm | 17'4" x 17'4"

**BEDROOM**  
5180mm x 4140mm | 17'0" x 13'6"

**APARTMENT  
LG12** **1 BEDROOM**

**TOTAL AREA**  
84.0 sq m | 904.2 sq ft

**LIVING/DINING/KITCHEN**  
6155mm x 6725mm | 20'2" x 22'0"

**BEDROOM**  
6145mm x 4155mm | 20'1" x 13'7"

**WINTER GARDEN**  
2225mm x 2560mm | 7'3" x 8'4"

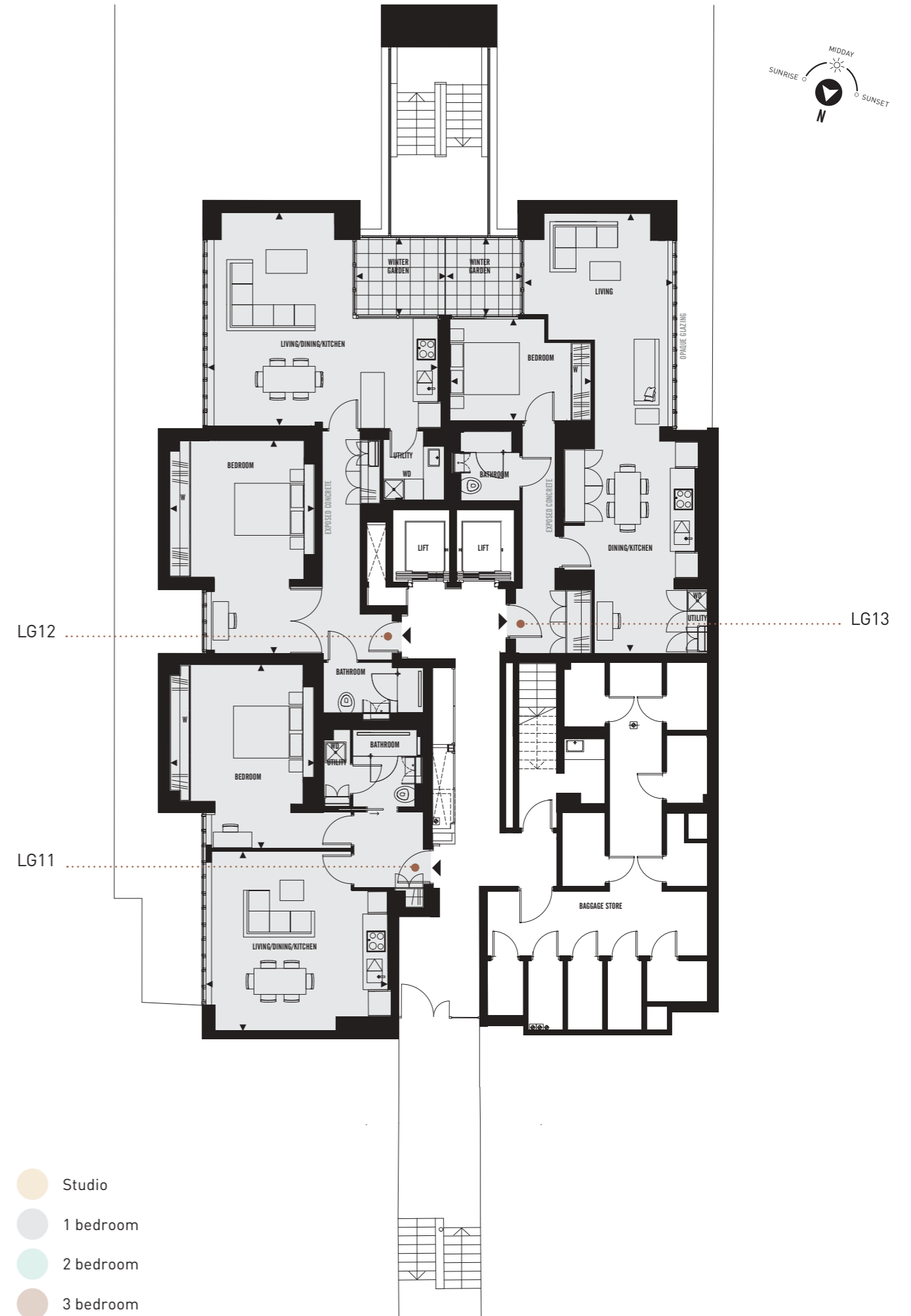
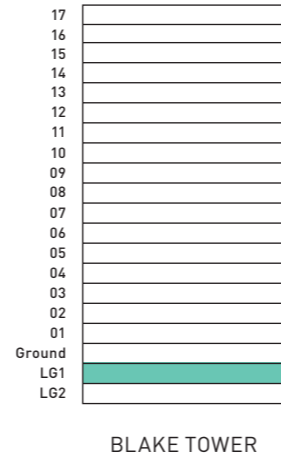
**APARTMENT  
LG13** **1 BEDROOM**

**TOTAL AREA**  
77.1 sq m | 829.9 sq ft

**LIVING/DINING/KITCHEN**  
12680mm x 4285mm | 41'7" x 14'0"

**BEDROOM**  
4090mm x 2930mm | 14'0" x 7'7"

**WINTER GARDEN**  
2245mm x 2165mm | 7'4" x 7'1"



# FLOOR: GROUND

## APARTMENT 1 1 BEDROOM

**TOTAL AREA**  
70.1 sq m | 754.6 sq ft

**LIVING/DINING/KITCHEN**  
12655mm x 4130mm | 41'6" x 13'6"

**BEDROOM**  
6380mm x 4160mm | 20'11" x 13'7"

## APARTMENT 2 2 BEDROOM

**TOTAL AREA**  
100.2 sq m | 1078.6 sq ft

**LIVING/DINING/KITCHEN**  
6905mm x 5000mm | 22'7" x 16'4"

**MASTER BEDROOM**  
4210mm x 4980mm | 13'9" x 16'4"

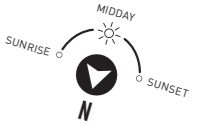
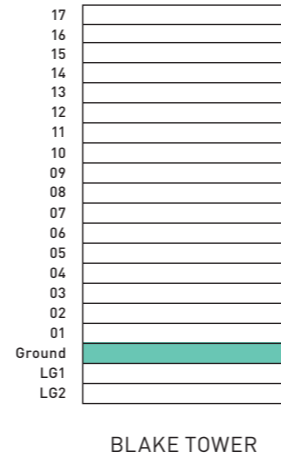
**BEDROOM 2**  
2860mm x 5915mm | 9'4" x 19'4"

## APARTMENT 3 1 BEDROOM

**TOTAL AREA**  
49.4 sq m | 531.7 sq ft

**LIVING/DINING/KITCHEN**  
5250mm x 4260mm | 17'2" x 13'11"

**BEDROOM**  
3180mm x 4190mm | 10'5" x 13'8"



# FLOOR: 01

**APARTMENT 11** **1 BEDROOM**

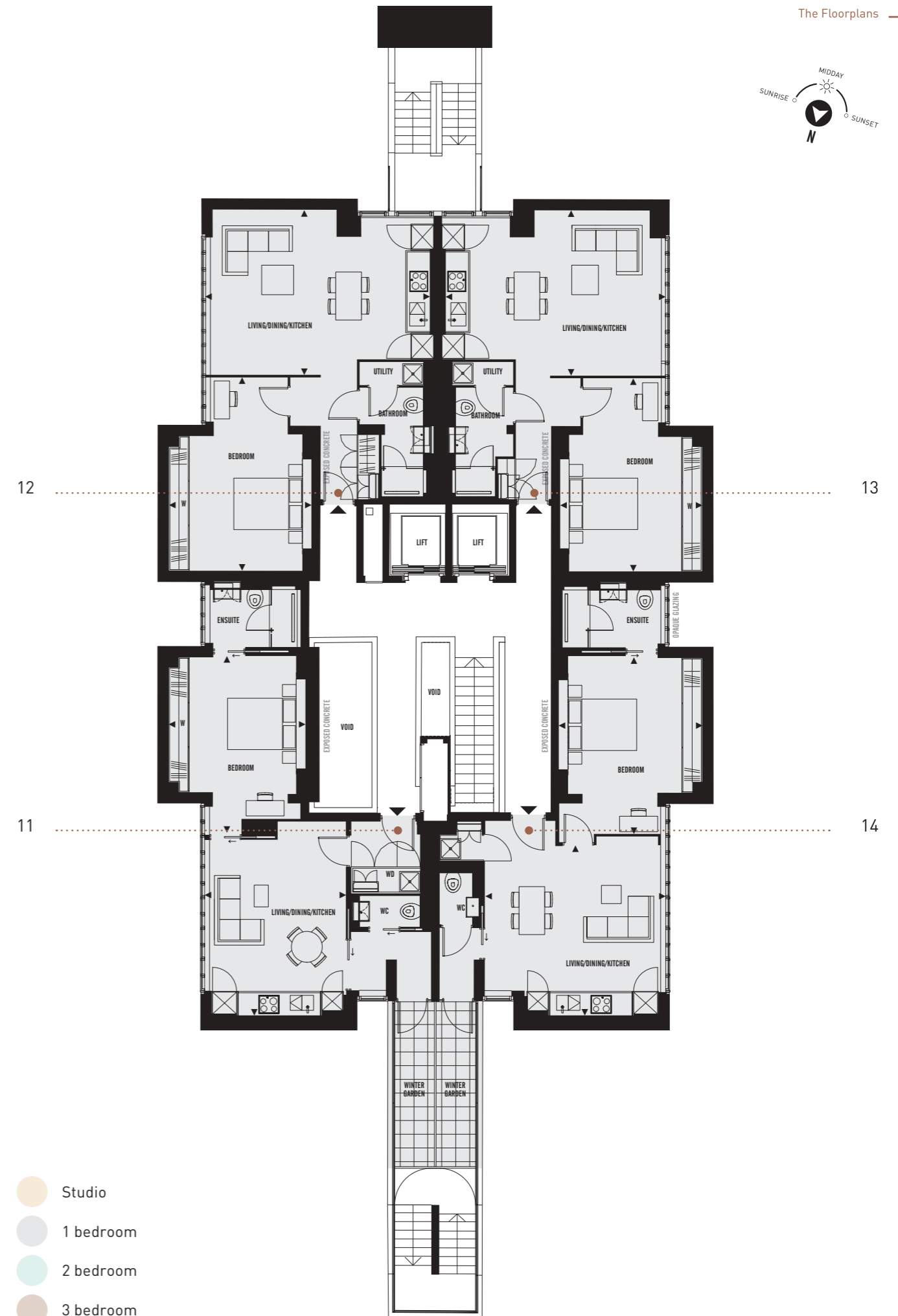
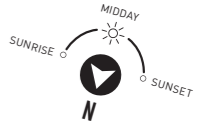
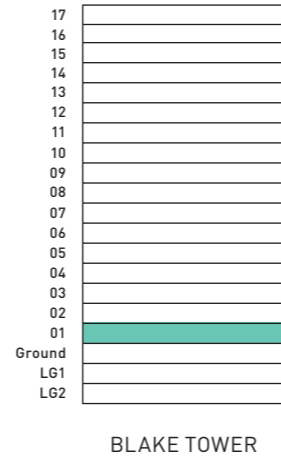
- TOTAL AREA**  
66.1 sq m | 711.5 sq ft
- LIVING/DINING/KITCHEN**  
5665mm x 4010mm | 18'7" x 13'1"
- BEDROOM**  
4165mm x 5130mm | 13'7" x 16'9"
- WINTER GARDEN**  
4810mm x 1155mm | 15'9" x 3'9"

**APARTMENTS 12, 13** **1 BEDROOM**

- TOTAL AREA**  
65.8 sq m | 708.3 sq ft
- LIVING/DINING/KITCHEN**  
6640mm x 4580mm | 21'9" x 15'0"
- BEDROOM**  
5755mm x 4160mm | 18'10" x 13'7"

**APARTMENT 14** **1 BEDROOM**

- TOTAL AREA**  
67.0 sq m | 721.2 sq ft
- LIVING/DINING/KITCHEN**  
5750mm x 5275mm | 10'10" x 17'3"
- BEDROOM**  
5190mm x 4190mm | 17'0" x 13'8"
- WINTER GARDEN**  
4810mm x 1150mm | 15'9" x 3'9"



# FLOOR: 02

## APARTMENT 21 1 BEDROOM

**TOTAL AREA**  
46.5 sq m | 500.5 sq ft

**LIVING/DINING/KITCHEN**  
5210mm x 5250mm | 17'1" x 17'2"

**BEDROOM**  
4815mm x 3255mm | 15'9" x 10'8"

**DRESSING ROOM**  
1980mm x 2200mm | 6'6" x 7'2"

## APARTMENT 22 SUITE

**TOTAL AREA**  
41.8 sq m | 449.9 sq ft

**LIVING/DINING/KITCHEN**  
6485mm x 3900mm | 21'3" x 12'9"

**BEDROOM**  
2945mm x 3920mm | 9'7" x 12'10"

## APARTMENT 23 1 BEDROOM

**TOTAL AREA**  
46.1 sq m | 496.2 sq ft

**LIVING/DINING/KITCHEN**  
5080mm x 3745mm | 16'8" x 12'3"

**BEDROOM**  
5080mm x 2750mm | 16'8" x 9'0"

## APARTMENT 24 1 BEDROOM

**TOTAL AREA**  
76.3 sq m | 821.3 sq ft

**LIVING/DINING/KITCHEN**  
5270mm x 6470mm | 17'3" x 21'2"

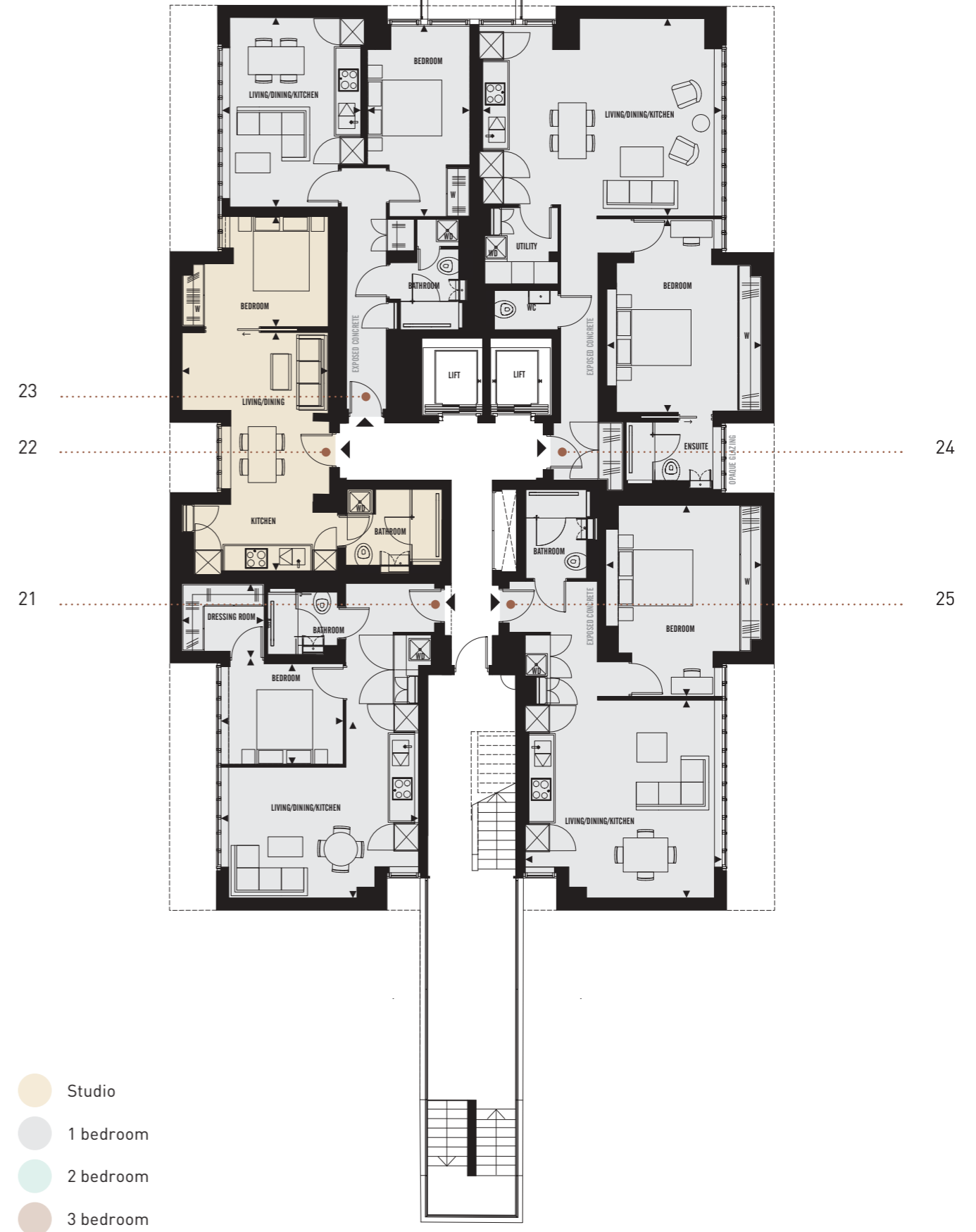
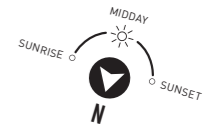
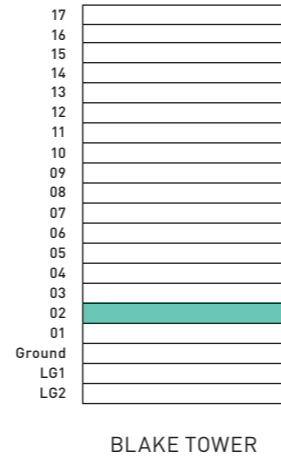
**BEDROOM**  
5190mm x 3900mm | 17'0" x 12'9"

## APARTMENT 25 1 BEDROOM

**TOTAL AREA**  
60.5 sq m | 651.2 sq ft

**LIVING/DINING/KITCHEN**  
5020mm x 5290mm | 16'5" x 17'4"

**BEDROOM**  
5110mm x 4195mm | 16'9" x 13'9"



# FLOOR: 03

## APARTMENT 31 1 BEDROOM

**TOTAL AREA**  
53.8 sq m | 579.1 sq ft

**LIVING/DINING/KITCHEN**  
5220mm x 6310mm | 17'1" x 20'8"

**BEDROOM**  
4830mm x 4290mm | 15'10" x 14'0"

**DRESSING ROOM**  
2070mm x 2200mm | 6'9" x 7'3"

## APARTMENT 32 SUITE

**TOTAL AREA**  
44.6 sq m | 480.1 sq ft

**LIVING/DINING/KITCHEN**  
6465mm x 3920mm | 21'2" x 12'10"

**BEDROOM**  
2905mm x 3920mm | 9'6" x 12'10"

## APARTMENT 33 1 BEDROOM

**TOTAL AREA**  
51.6 sq m | 555.4 sq ft

**LIVING/DINING/KITCHEN**  
5115mm x 4180mm | 16'9" x 15'9"

**BEDROOM**  
5330mm x 2750mm | 17'5" x 9'0"

## APARTMENT 34 2 BEDROOM

**TOTAL AREA**  
81.8 sq m | 880.5 sq ft

**LIVING/DINING/KITCHEN**  
6175mm x 4690mm | 20'3" x 15'4"

**MASTER BEDROOM**  
5345mm x 2755mm | 17'6" x 9'0"

**BEDROOM 2**  
5115mm x 2750mm | 16'9" x 9'0"

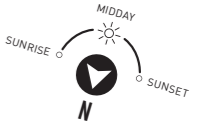
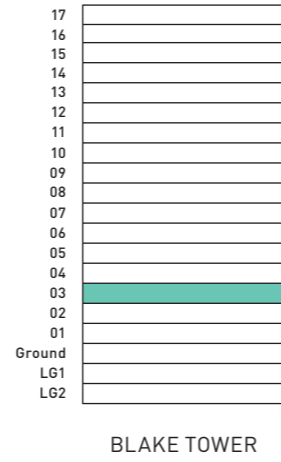
## APARTMENT 35 2 BEDROOM

**TOTAL AREA**  
71.8 sq m | 772.9 sq ft

**LIVING/DINING/KITCHEN**  
4910mm x 6325mm | 16'1" x 20'9"

**MASTER BEDROOM**  
5055mm x 4350mm | 16'7" x 14'3"

**BEDROOM 2**  
2695mm x 4310mm | 8'10" x 14'1"



# FLOORS: 04-07

## APARTMENTS 41, 51, 61, 71

1 BEDROOM

**TOTAL AREA**

53.8 sq m | 579.1 sq ft

**LIVING/DINING/KITCHEN**

5220mm x 6310mm | 17'1" x 20'8"

**BEDROOM**

4830mm x 4290mm | 15'10" x 14'0"

**DRESSING ROOM**

2070mm x 2200mm | 6'9" x 7'3"

## APARTMENTS 42, 52, 62, 72

SUITE

**TOTAL AREA**

44.6 sq m | 480.1 sq ft

**LIVING/DINING/KITCHEN**

6465mm x 3920mm | 21'2" x 12'10"

**BEDROOM**

2905mm x 3920mm | 9'6" x 12'10"

## APARTMENTS 43, 53, 63, 73

1 BEDROOM

**TOTAL AREA**

51.6 sq m | 555.4 sq ft

**LIVING/DINING/KITCHEN**

5115mm x 4180mm | 16'9" x 15'9"

**BEDROOM**

5330mm x 2750mm | 17'5" x 9'0"

## APARTMENTS 44, 54, 64, 74

2 BEDROOM

**TOTAL AREA**

81.8 sq m | 880.5 sq ft

**LIVING/DINING/KITCHEN**

6175mm x 4690mm | 20'3" x 15'4"

**MASTER BEDROOM**

5345mm x 2755mm | 17'6" x 9'0"

**BEDROOM 2**

5115mm x 2750mm | 16'9" x 9'0"

## APARTMENTS 45, 55, 65, 75

2 BEDROOM

**TOTAL AREA**

71.8 sq m | 772.9 sq ft

**LIVING/DINING/KITCHEN**

4910mm x 6325mm | 16'1" x 20'9"

**MASTER BEDROOM**

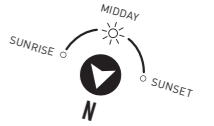
5055mm x 4350mm | 16'7" x 14'3"

**BEDROOM 2**

2695mm x 4310mm | 8'10" x 14'1"



BLAKE TOWER



43  
53  
63  
73  
  
42  
52  
62  
72  
  
41  
51  
61  
71

44  
54  
64  
74  
  
45  
55  
65  
75



- Studio
- 1 bedroom
- 2 bedroom
- 3 bedroom

# FLOORS: 08-10, 12 & 13

**APARTMENTS**  
81, 84, 91, 94, 101, 104,  
121, 124, 131, 134 **1 BEDROOM**

**TOTAL AREA**  
48.0 sq m | 516.7 sq ft

**LIVING/DINING/KITCHEN**  
6205mm x 3980mm | 20'4" x 13'0"

**BEDROOM**  
4125mm x 2755mm | 13'6" x 9'0"

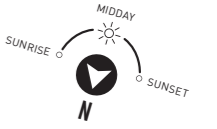
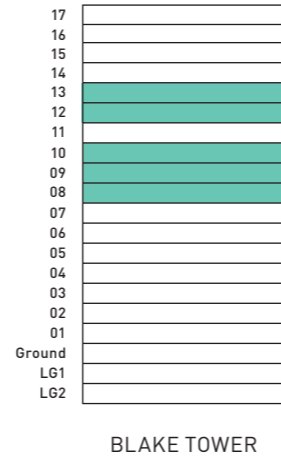
**APARTMENTS**  
82, 83, 92, 93, 102, 103,  
122, 123, 132, 133 **2 BEDROOM**

**TOTAL AREA**  
108.0 sq m | 1162.5 sq ft

**LIVING/DINING/KITCHEN**  
5290mm x 7640mm | 17'4" x 25'0"

**MASTER BEDROOM**  
5110mm x 4140mm | 16'9" x 13'6"

**BEDROOM 2**  
4180mm x 4140mm | 13'8" x 13'6"



- Studio
- 1 bedroom
- 2 bedroom
- 3 bedroom

# FLOOR: 11

**APARTMENTS**  
111, 114 **1 BEDROOM**

**TOTAL AREA**

49.7 sq m | 534.9 sq ft

**LIVING/DINING/KITCHEN**

5550mm x 5265mm | 18'2" x 17'3"

**BEDROOM**

2595mm x 5265mm | 8'6" x 17'3"

**BALCONY**

6225mm x 885mm | 20'5" x 2'10"

**APARTMENTS**  
112, 113 **2 BEDROOM**

**TOTAL AREA**

92.9 sq m | 999.9 sq ft

**LIVING/DINING/KITCHEN**

5295mm x 6575mm | 17'4" x 21'6"

**MASTER BEDROOM**

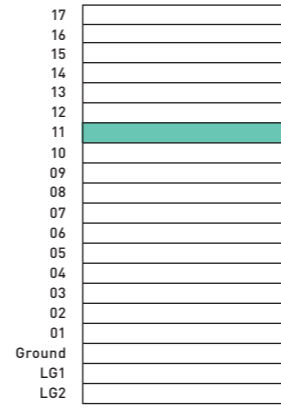
5215mm x 3070mm | 17'1" x 10'0"

**BEDROOM 2**

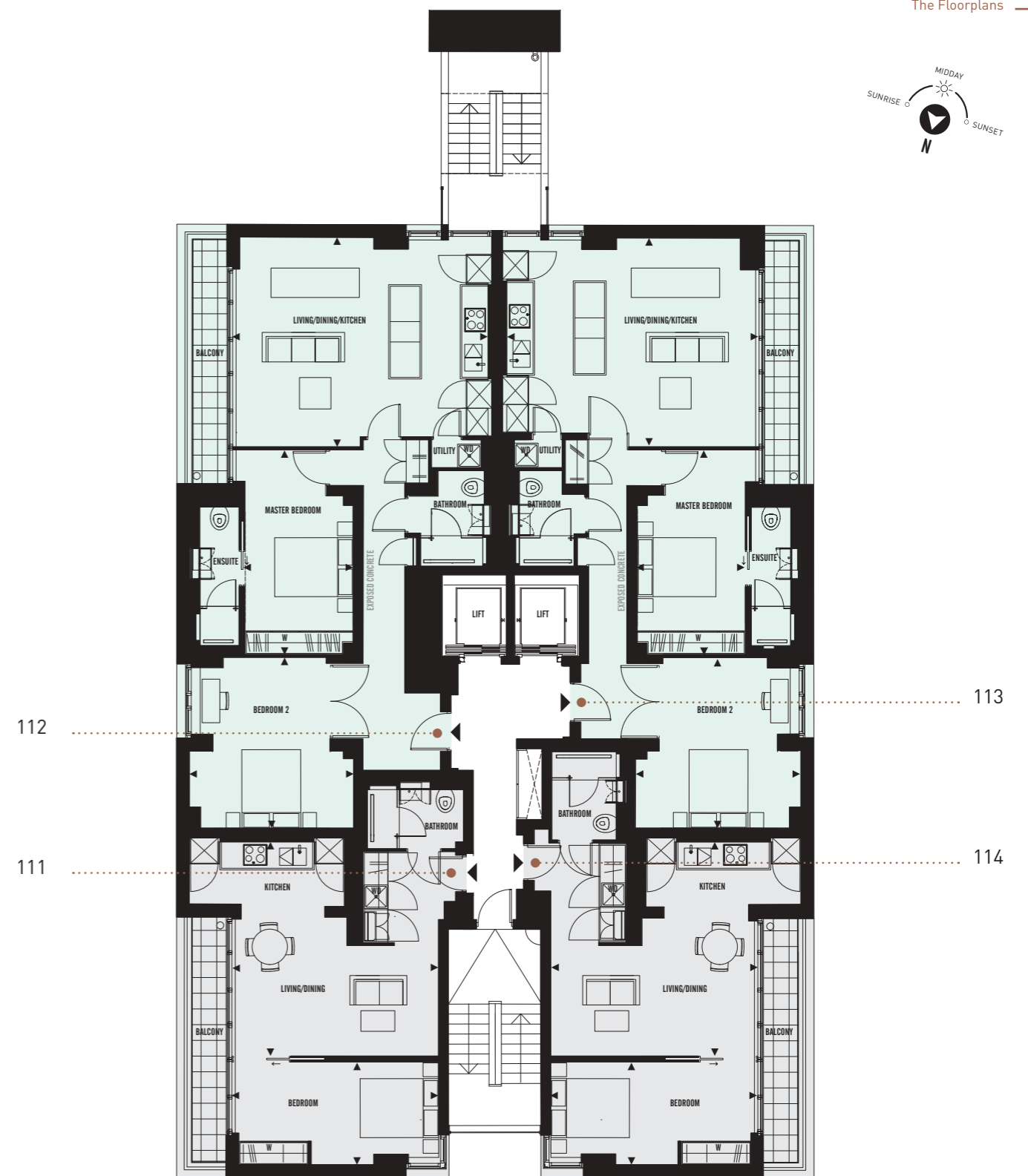
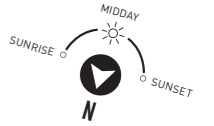
4315mm x 4205mm | 14'1" x 13'9"

**BALCONY**

6225mm x 885mm | 20'5" x 2'10"



BLAKE TOWER



- Studio
- 1 bedroom
- 2 bedroom
- 3 bedroom



# FLOORS: 14-15

## APARTMENTS 141, 151 1 BEDROOM

**TOTAL AREA**

71.9 sq m | 773.9 sq ft

**LIVING/DINING/KITCHEN**

5300mm x 6370mm | 17'4" x 20'10"

**BEDROOM**

4950mm x 4180mm | 16'2" x 13'8"

## APARTMENTS 142, 152 3 BEDROOM

**TOTAL AREA**

102.2 sq m | 1100.1 sq ft

**LIVING/DINING/KITCHEN**

7970mm x 4215mm | 26'1" x 13'9"

**MASTER BEDROOM**

5985mm x 3275mm | 19'7" x 10'8"

**BEDROOM 2**

3980mm x 2755mm | 13'0" x 9'0"

**BEDROOM 3**

3620mm x 4215mm | 11'10" x 13'9"

## APARTMENTS 143, 153 3 BEDROOM

**TOTAL AREA**

136.5 sq m | 1469.3 sq ft

**LIVING/DINING**

6205mm x 6325mm | 20'4" x 20'9"

**KITCHEN**

2705mm x 4205mm | 8'10" x 13'9"

**MASTER BEDROOM**

4215mm x 5430mm | 13'9" x 17'9"

**BEDROOM 2**

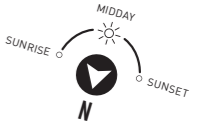
2805mm x 4200mm | 9'2" x 13'9"

**BEDROOM 3**

2755mm x 4195mm | 9'0" x 13'9"

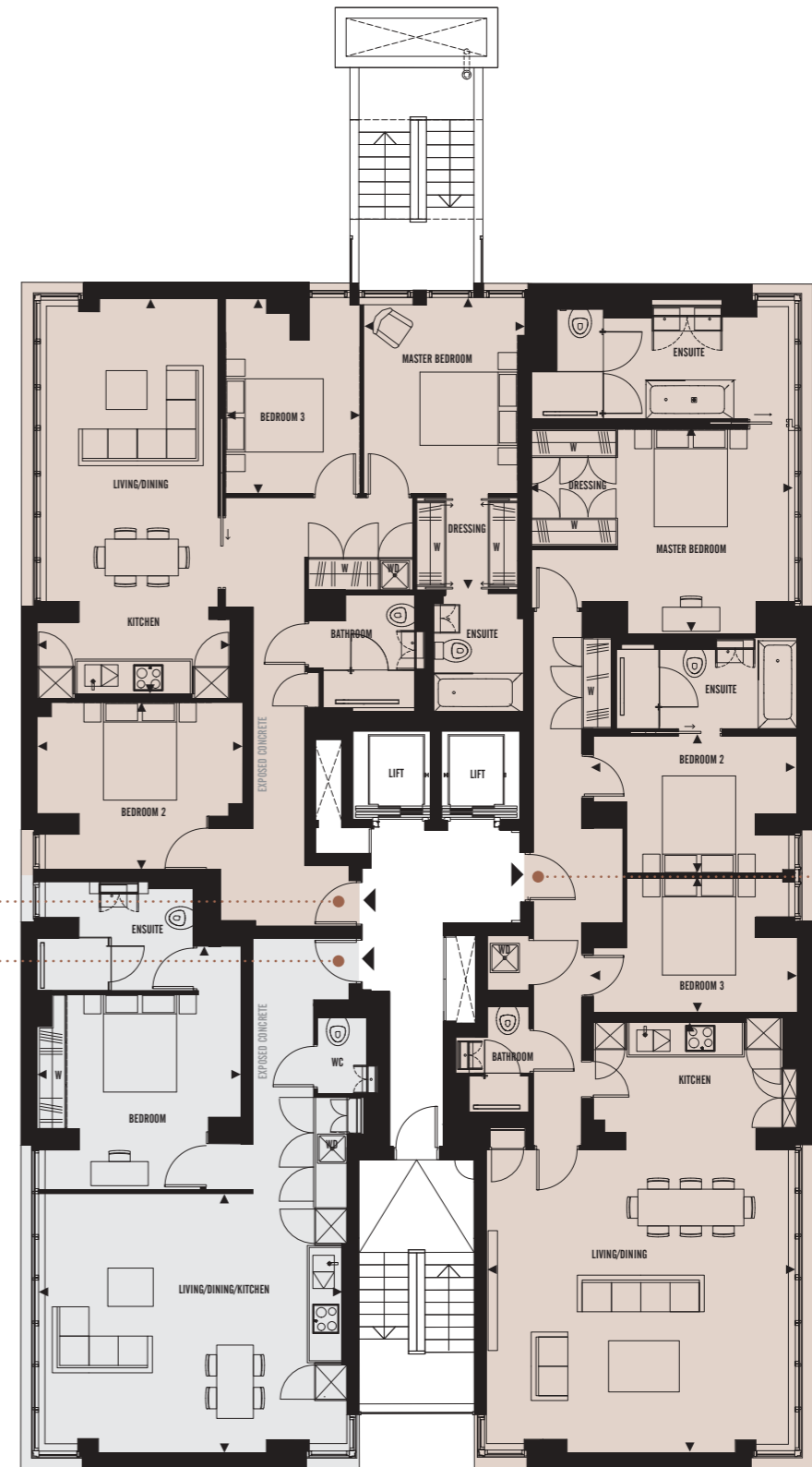


BLAKE TOWER



142  
152  
141  
151

143  
153



- Studio
- 1 bedroom
- 2 bedroom
- 3 bedroom

# CONTACT US.

**Blake Tower**  
2 Fann Street,  
London  
EC2Y 8BR

020 3538 1539  
blaketower@redrow.co.uk  
blaketower.com

**Redrow**  
1st Floor Unex Tower  
7 Station Street  
London E15 1AZ

020 8536 5120  
london.sales@redrow.co.uk  
redrow.co.uk/london



## OUR PARTNERS

---

### CONRAN+ PARTNERS

The information contained in this and any accompanying documents is provided for general guidelines only and does not form the whole or any part of any offer, contract or warranty. These particulars should not be relied upon as accurately describing any of the specific matters described by any order under the Consumer Protection from Unfair Trading Regulations 2008. Customers are strongly advised to contact a Redrow Homes representative for further details and to satisfy themselves as to their accuracy. All areas and dimensions have been taken from architects plans prior to construction therefore whilst the information is believed to be correct its accuracy cannot be guaranteed and does not form part of any contract. They are not intended to be used for carpet sizes, appliance sizes or items of furniture. Purchasers must therefore rely on their own inspection to verify any information provided. All dimensions are within + or - 50mm. Your attention is drawn to the fact that it may not be possible to obtain the products as referred to in the specification. In such cases a similar alternative will be provided and Redrow Homes reserve the right to make these changes as required. Images are representative only; maps are not to scale and show approximate locations only. Computer generated images, floorplans and room layouts are indicative only, based on information correct at time of going to print and may therefore be subject to review and optimisation. Timings, unless stated otherwise, are taken from Transport for London 2015. Blake Tower is a marketing name and will not necessarily form part of the approved postal address.



