

**BLAKE
TOWER**

FLOORPLANS

 **REDROW**
A BETTER WAY TO LIVE

BLAKE TOWER: THE FLOORPLANS.

BLAKE TOWER

The Building	4
The View	6

THE BARBICAN

The Barbican Estate	8
Barbican Estate Map	10

THE INTERIORS

Overview	12
Conran and Partners	14
Specification	24

THE FLOORPLANS

Lower Ground 2	28
Lower Ground 1	30
Ground	32
Floor 01	34
Floor 02	36
Floor 03	38
Floors 04-07	40
Floors 08-10, 12 & 13	42
Floor 11	44
Floors 14-15	46

MID-CENTURY BRUTALISM REIMAGINED.



Computer enhanced image

THE FOURTH TOWER.

Built by architects Chamberlin, Powell and Bon in 1968, Blake Tower strikes an unmistakable silhouette on the Barbican Estate.

Redrow is breathing new life into the raw concrete walls of this mid-century icon. Blake Tower boasts the first new homes to be built in the Barbican for decades - 74 sleek, contemporary apartments created in partnership with legendary design house Conran and Partners.

This new benchmark in City living will bring with it a new residential population, and a new sense of life and purpose for the Square Mile's most iconic estate.

*YOUR OWN LONDON,
STORIED,
SOPHISTICATED
AND SUBLIME.*

The view from the 16th floor
of Blake Tower



THE CITY WITHIN A CITY.

The Barbican is unlike any other post-war development in England. Free from the financial and architectural restraint that defined its peers, the Barbican's sprawling, sculpted concrete covers 35 acres of Central London, took over 30 years to complete, and was declared "a wonder of the modern world" by the Queen of England.

This iconic estate changed the face of the City forever, but this neighbourhood has been the haunt of creatives and non-conformists for centuries. Once home to the likes of Milton and Shakespeare, the Barbican is still renowned as a centre for innovation and creativity.

Set in the midst of this unique development, Grade II listed Blake Tower reimagines Barbican living for the discerning contemporary Londoner in a collection of historically aware, robustly crafted, welcoming and beautiful homes.



The Barbican's seemingly radical architecture is designed to reference London's historical forms, including the raised viewing terraces, historic mews and garden square.



The Barbican's hand-finished exterior is a variation of *béton brut* – the raw concrete popularised by Le Corbusier in his *Unité d'habitation* in Marseilles.



The Barbican was intended as a "wholly urban" alternative to suburban post-war innovations such as the garden city and new town movements.

A UNIQUE ESTATE FOR THE DISCERNING LONDONER.



FARRINGDON*
COWCROSS STREET



GLASSHOUSE YARD



BARBICAN

Key

- Blake Tower
- The Barbican Centre
- Lakes
- Gardens
- Residential Buildings
- Roads
- Walkways
- * Crossrail opens 2018

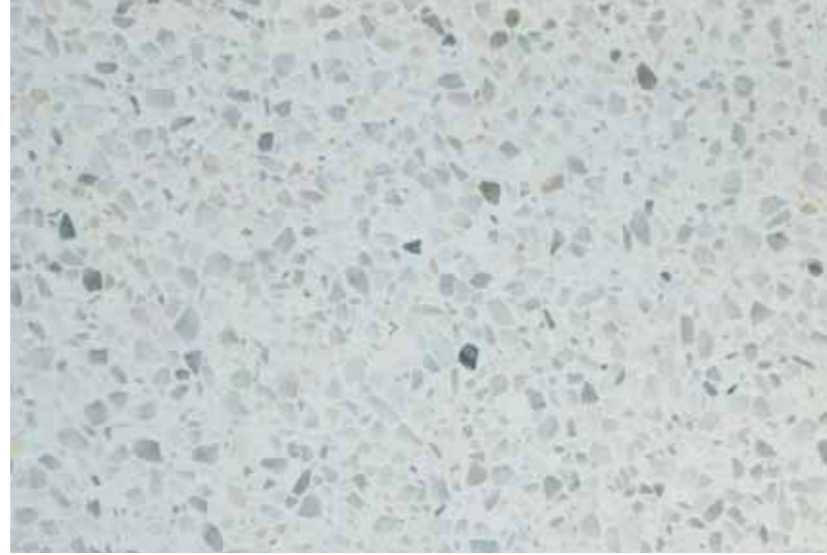
Map is indicative only



INTERIORS TO UPHOLD HISTORY.

Blake Tower's collection of apartments is designed to speak the Barbican's language. These are beautiful, functional apartments with a keen awareness of their historical importance and a luxurious, modern specification.

These landmark new Barbican residences share the same eye for detail as the estate's mid-century apartments – it's there in the concrete reveals and brass panelling of the landings, and in the clean interior lines of polished plaster and timber. This is matched by a cutting-edge specification, with innovative, integrated lighting, custom tiling and impeccable finishes giving the apartments a crisp and modern aesthetic that is all their own.



Terrazzo sourced from Italy will become a defining and beautiful feature of Blake Tower.

DETAILS BY CONRAN AND PARTNERS.

Boasting some of the City's most recognisable architecture, Blake Tower needed interiors that could live up to their iconic setting. That's why Redrow chose to work with Conran and Partners.

A benchmark for excellence in British architecture and interiors for over 30 years, Conran and Partners have a proven track record for reinventing prestigious London spaces. They're raising the bar again with their work on the Blake Tower, demonstrating their expertise with superior attention to detail and carefully considered high specification.



Discover custom-designed brass door levers and integrated brass joinery handles throughout.



Using terrazzo sourced from Italy, the hand-carved vanity basins feature a hand-finished curve derived from forms found within the Barbican.

Many apartments benefit from exposed original concrete walls, with a rope junction between the concrete and the timber flooring.





Photography of Blake Tower show apartment

*CONTEMPORARY
BRUTALISM – RAW
AND GEOMETRIC,
YET DELICATE
AND REFINED.*





Photography of Blake Tower show apartment



Photography of Blake Tower show apartment

Utilising the original listed fenestration, bedrooms are orientated to maximise natural light and best highlight the strong geometries intended by Chamberlin, Powell and Bon.



SPECIFICATION.

GENERAL

- Stained oak finish apartment entrance and internal doors
- Satin brass finished door furniture
- Matt paint finish to the walls
- Exposed concrete feature wall to the hallway (where indicated)
- New aluminium frame double glazed windows, in keeping with the style of the original windows
- Coat closet fitted with hanging rail, shelf and drawers (where indicated)
- Fitted soft close wardrobe with shelf, hanging rail and drawers to the master bedroom
- Window seat to the master bedroom (where indicated)
- Built in feature recess above the bed (where indicated)
- 'A' rated appliances throughout
- All apartments covered by a 10 year building warranty provided by LABC

KITCHEN

- Fully fitted contemporary kitchen units with soft close mechanism to doors and drawers
- LED under pelmet lighting to the wall units
- Terazzo worktop and splash backs
- Terazzo sink with brass finished mixer tap
- Instant hot water tap
- Integrated appliances including a double oven (2 & 3 beds only), fridge/freezer, dishwasher & microwave
- Induction hob
- Built in extractor unit
- Freestanding washer/dryer to the hall cupboard or utility space (as shown on the plans)

BATHROOM & ENSUITES

- Brass Crosswater brassware
- Shower enclosure with Terrazzo tiled floor & glass door, to the bathroom and ensuite (only where indicated)
- Full height ceramic wall tiling to the bathroom and ensuite
- Terazzo basin and splashback
- Shaver socket to bathroom and ensuite
- Mirrored cabinet above the basin in the bathroom and ensuite

ELECTRICAL

- Wired to receive HD television and Sky Plus to the living room and all bedrooms
- All apartments will be wired to receive Fibre Optic broadband (subject to subscription)
- Telephone and data points to living area and all bedrooms
- Mains operated smoke and heat detectors with battery backup
- White downlighters throughout, with dimmer switches to the living room
- Feature pendant lighting point either side of the bed in the master bedroom

SECURITY

- Door entry system with colour audio visual display screen
- Proximity access system to enter the building
- CCTV covering all entrances & exits to the buildings, including bin and cycle store areas, linked back to the concierge/management suite

HEATING

- Wet underfloor heating with individual room thermostats
- Individually controlled heating systems to each apartment
- Electric heated towel rail to the bathroom and ensuite

FLOORING

- 200mm wide engineered oak, UV oil treated, flooring to all areas (except bedrooms & wet areas)
- Carpet to the bedrooms
- Terrazzo tiling to the bathroom and ensuite
- Terazzo feature tiling in the kitchen (subject to kitchen layout)

BARBICAN AMENITIES*

- Underground parking available to rent on short or long-term basis
- Limited number of onsite storage spaces available
- Access to the Barbican Residents' Association
- Barbican Playgroup/ Parents and Toddlers onsite
- Bicycle storage
- Use of communal gardens incorporating 2 children's playgrounds (residents only)
- On-site organic food shop
- Hairdresser
- Residents' Tennis club
- Lakeside restaurants and café
- Arts centre
- Library
- Art gallery
- 3 cinema screens
- Zipcar



PRIVATE SPACES COCOONED BY CONCRETE.



FLOOR: LOWER GROUND 2

**APARTMENT
LG21** **1 BEDROOM**

TOTAL AREA
87.9 sq m | 946.2 sq ft

LIVING/DINING/KITCHEN
6150mm x 6580mm | 20'2" x 21'7"

BEDROOM
6575mm x 4150mm | 21'6" x 13'7"

WINTER GARDEN
2225mm x 2545mm | 7'3" x 8'4"

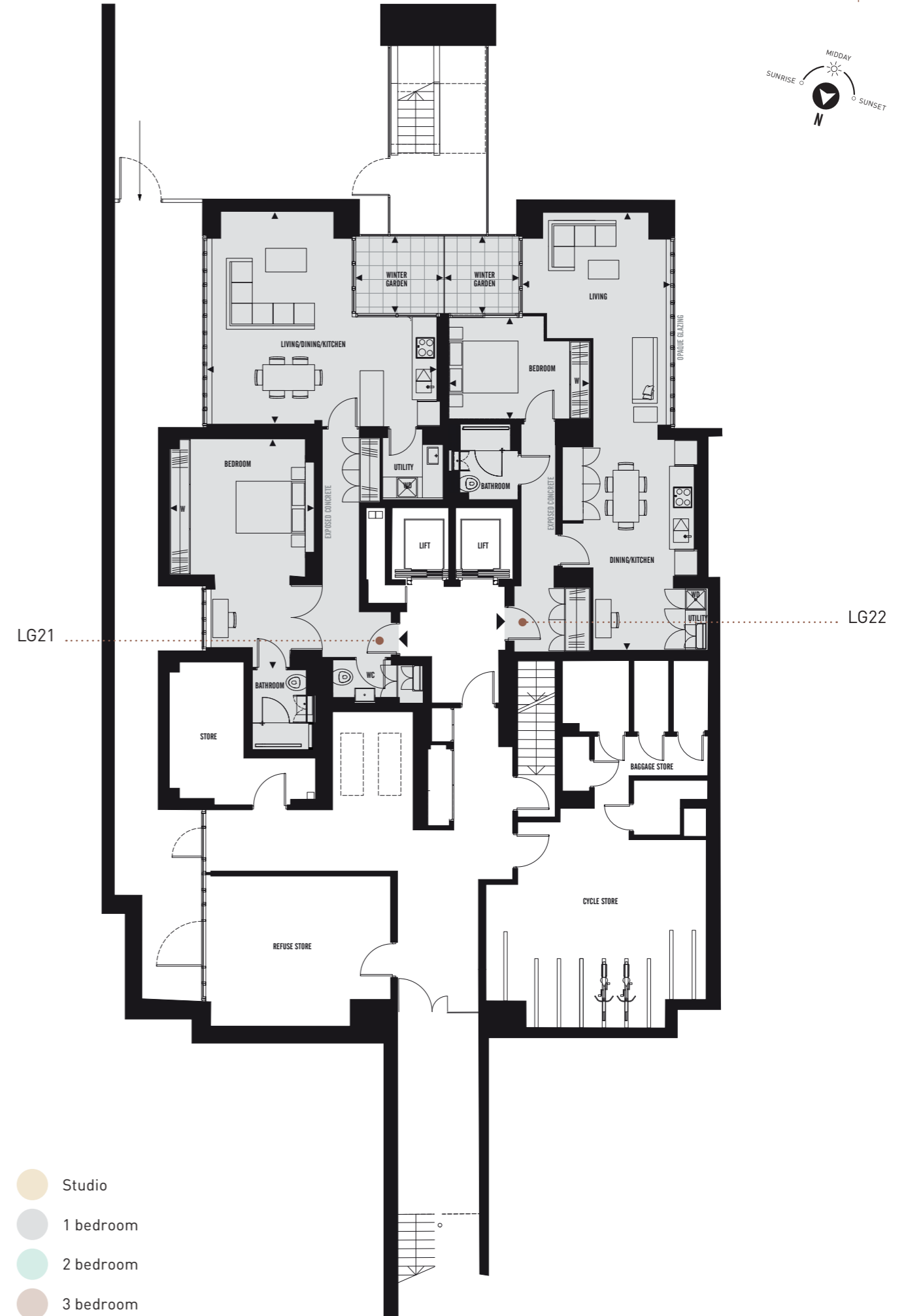
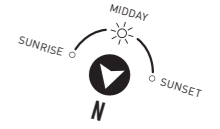
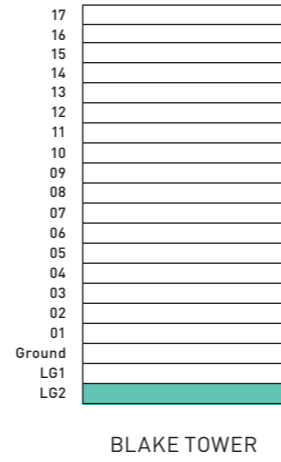
**APARTMENT
LG22** **1 BEDROOM**

TOTAL AREA
77.3 sq m | 832.1 sq ft

LIVING/DINING/KITCHEN
12655mm x 4285mm | 41'6" x 14'0"

BEDROOM
4065mm x 2930mm | 13'4" x 9'7"

WINTER GARDEN
2280mm x 2140mm | 7'5" x 7'0"



FLOOR: LOWER GROUND 1

**APARTMENT
LG11** **1 BEDROOM**

TOTAL AREA
60.5 sq m | 651.2 sq ft

LIVING/DINING/KITCHEN
5305mm x 5300mm | 17'4" x 17'4"

BEDROOM
5180mm x 4140mm | 17'0" x 13'6"

**APARTMENT
LG12** **1 BEDROOM**

TOTAL AREA
84.0 sq m | 904.2 sq ft

LIVING/DINING/KITCHEN
6155mm x 6725mm | 20'2" x 22'0"

BEDROOM
6145mm x 4155mm | 20'1" x 13'7"

WINTER GARDEN
2225mm x 2560mm | 7'3" x 8'4"

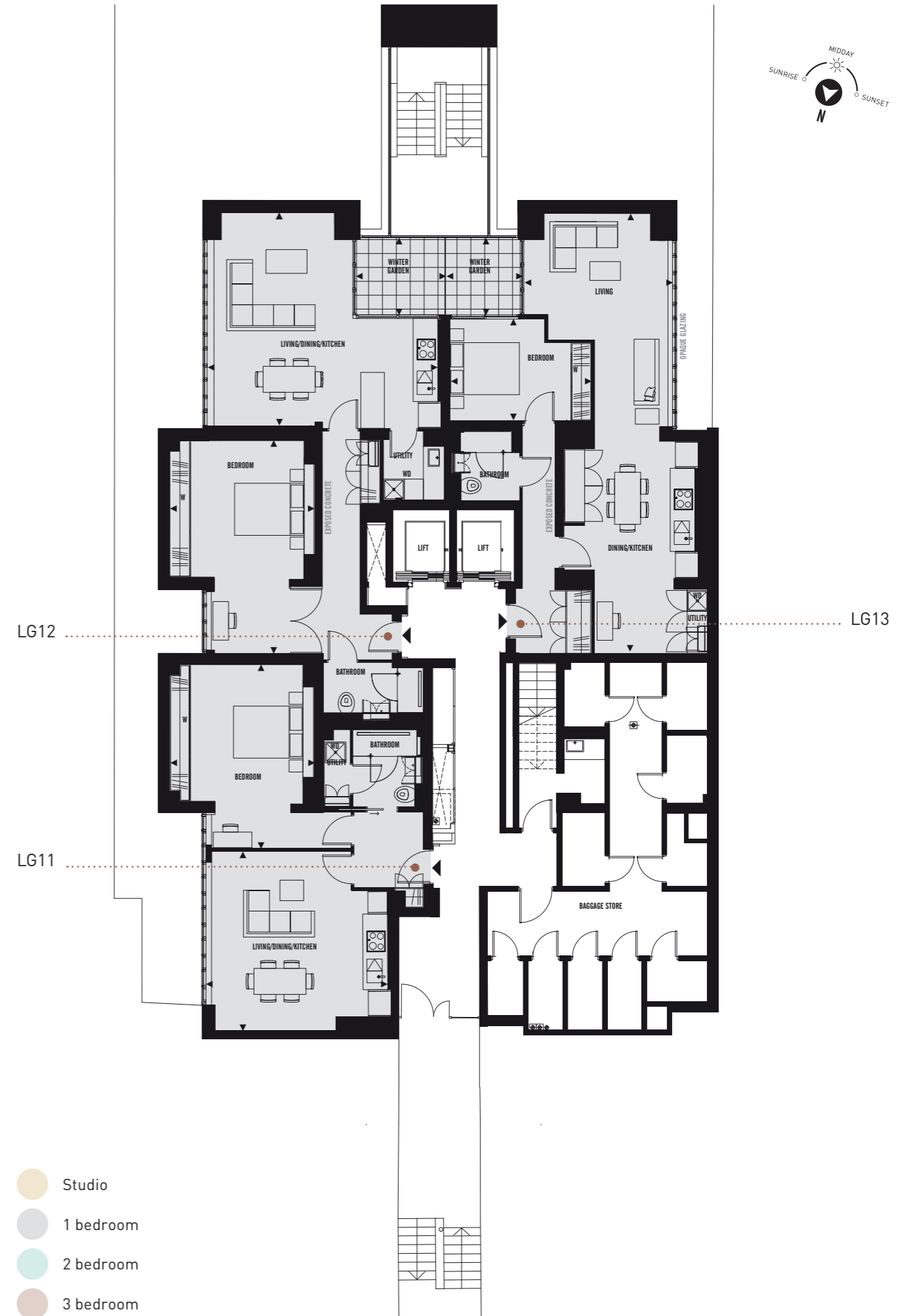
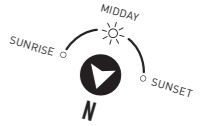
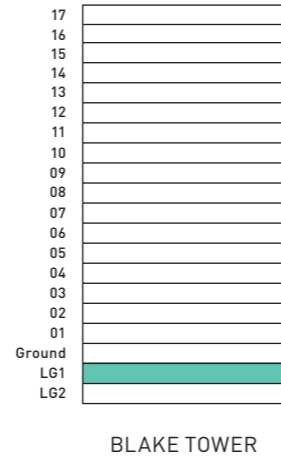
**APARTMENT
LG13** **1 BEDROOM**

TOTAL AREA
77.1 sq m | 829.9 sq ft

LIVING/DINING/KITCHEN
12680mm x 4285mm | 41'7" x 14'0"

BEDROOM
4090mm x 2930mm | 14'0" x 7'7"

WINTER GARDEN
2245mm x 2165mm | 7'4" x 7'1"



FLOOR: GROUND

APARTMENT 1 1 BEDROOM

TOTAL AREA
70.1 sq m | 754.6 sq ft

LIVING/DINING/KITCHEN
12655mm x 4130mm | 41'6" x 13'6"

BEDROOM
6380mm x 4160mm | 20'11" x 13'7"

APARTMENT 2 2 BEDROOM

TOTAL AREA
100.2 sq m | 1078.6 sq ft

LIVING/DINING/KITCHEN
6905mm x 5000mm | 22'7" x 16'4"

MASTER BEDROOM
4210mm x 4980mm | 13'9" x 16'4"

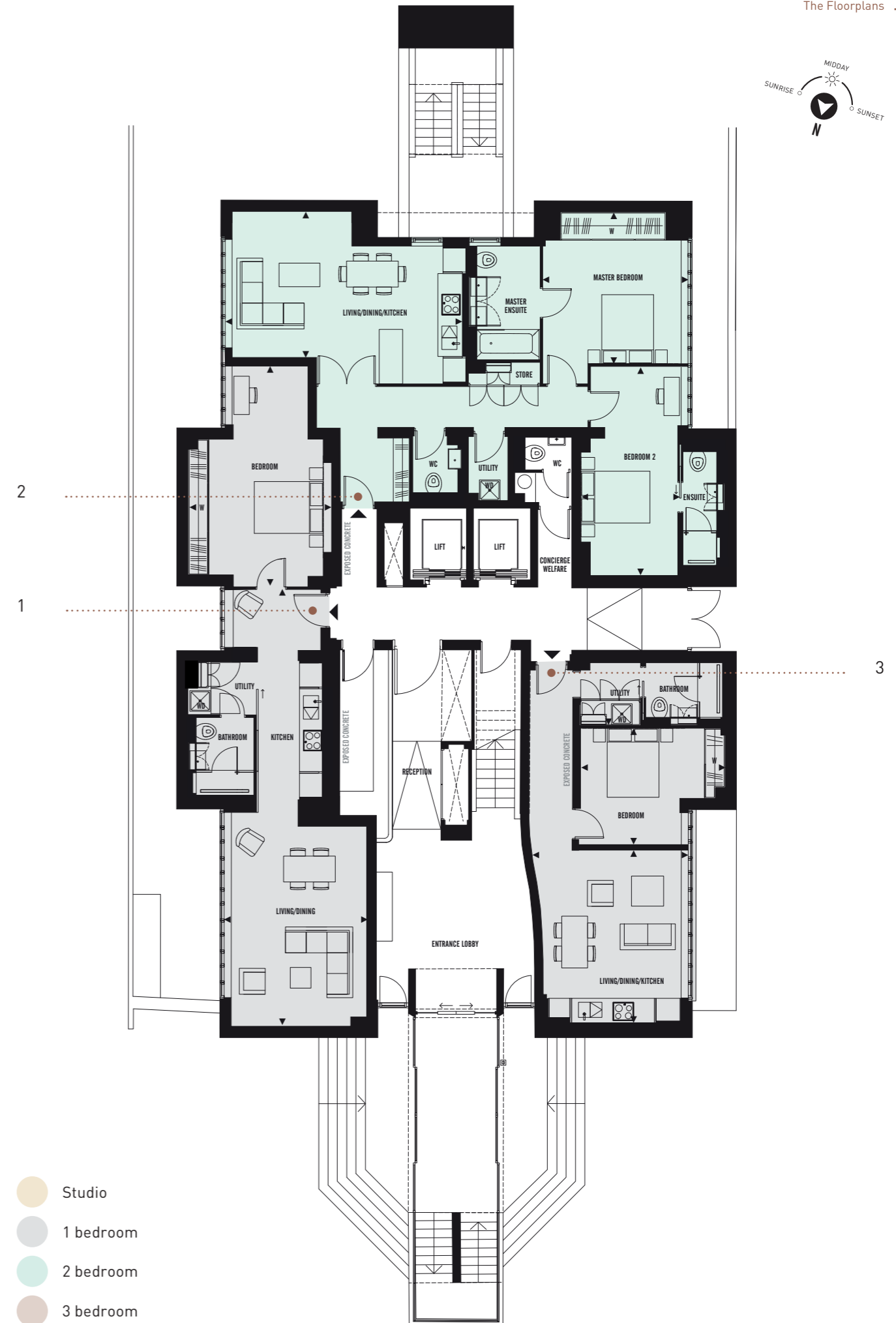
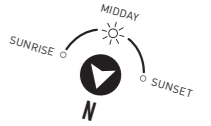
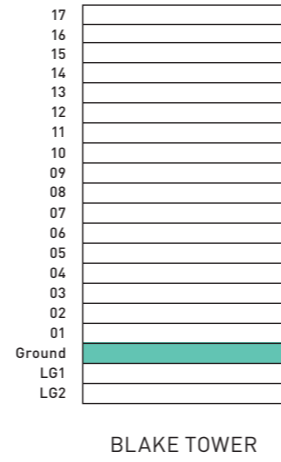
BEDROOM 2
2860mm x 5915mm | 9'4" x 19'4"

APARTMENT 3 1 BEDROOM

TOTAL AREA
49.4 sq m | 531.7 sq ft

LIVING/DINING/KITCHEN
5250mm x 4260mm | 17'2" x 13'11"

BEDROOM
3180mm x 4190mm | 10'5" x 13'8"



FLOOR: 01

APARTMENT 11 **1 BEDROOM**

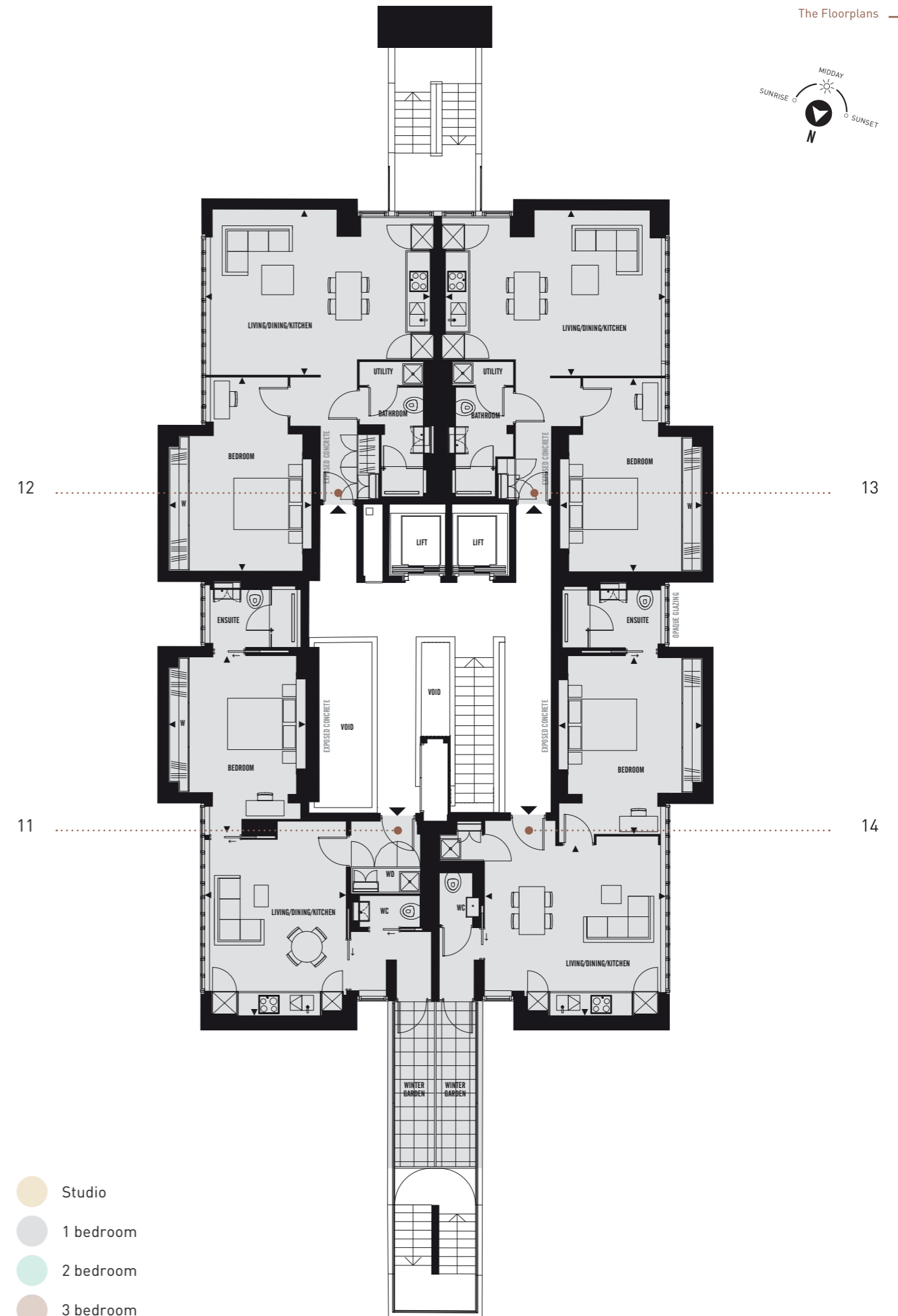
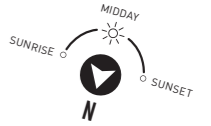
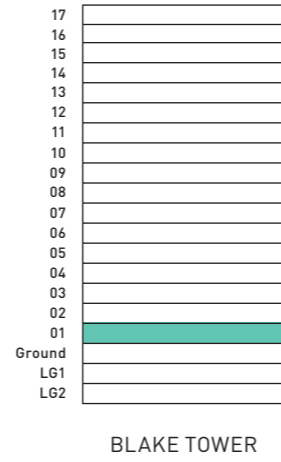
- TOTAL AREA**
66.1 sq m | 711.5 sq ft
- LIVING/DINING/KITCHEN**
5665mm x 4010mm | 18'7" x 13'1"
- BEDROOM**
4165mm x 5130mm | 13'7" x 16'9"
- WINTER GARDEN**
4810mm x 1155mm | 15'9" x 3'9"

APARTMENTS 12, 13 **1 BEDROOM**

- TOTAL AREA**
65.8 sq m | 708.3 sq ft
- LIVING/DINING/KITCHEN**
6640mm x 4580mm | 21'9" x 15'0"
- BEDROOM**
5755mm x 4160mm | 18'10" x 13'7"

APARTMENT 14 **1 BEDROOM**

- TOTAL AREA**
67.0 sq m | 721.2 sq ft
- LIVING/DINING/KITCHEN**
5750mm x 5275mm | 10'10" x 17'3"
- BEDROOM**
5190mm x 4190mm | 17'0" x 13'8"
- WINTER GARDEN**
4810mm x 1150mm | 15'9" x 3'9"



FLOOR: 02

APARTMENT 21 **1 BEDROOM**

TOTAL AREA
46.5 sq m | 500.5 sq ft

LIVING/DINING/KITCHEN
5210mm x 5250mm | 17'1" x 17'2"

BEDROOM
4815mm x 3255mm | 15'9" x 10'8"

DRESSING ROOM
1980mm x 2200mm | 6'6" x 7'2"

APARTMENT 22 **SUITE**

TOTAL AREA
41.8 sq m | 449.9 sq ft

LIVING/DINING/KITCHEN
6485mm x 3900mm | 21'3" x 12'9"

BEDROOM
2945mm x 3920mm | 9'7" x 12'10"

APARTMENT 23 **1 BEDROOM**

TOTAL AREA
46.1 sq m | 496.2 sq ft

LIVING/DINING/KITCHEN
5080mm x 3745mm | 16'8" x 12'3"

BEDROOM
5080mm x 2750mm | 16'8" x 9'0"

APARTMENT 24 **1 BEDROOM**

TOTAL AREA
76.3 sq m | 821.3 sq ft

LIVING/DINING/KITCHEN
5270mm x 6470mm | 17'3" x 21'2"

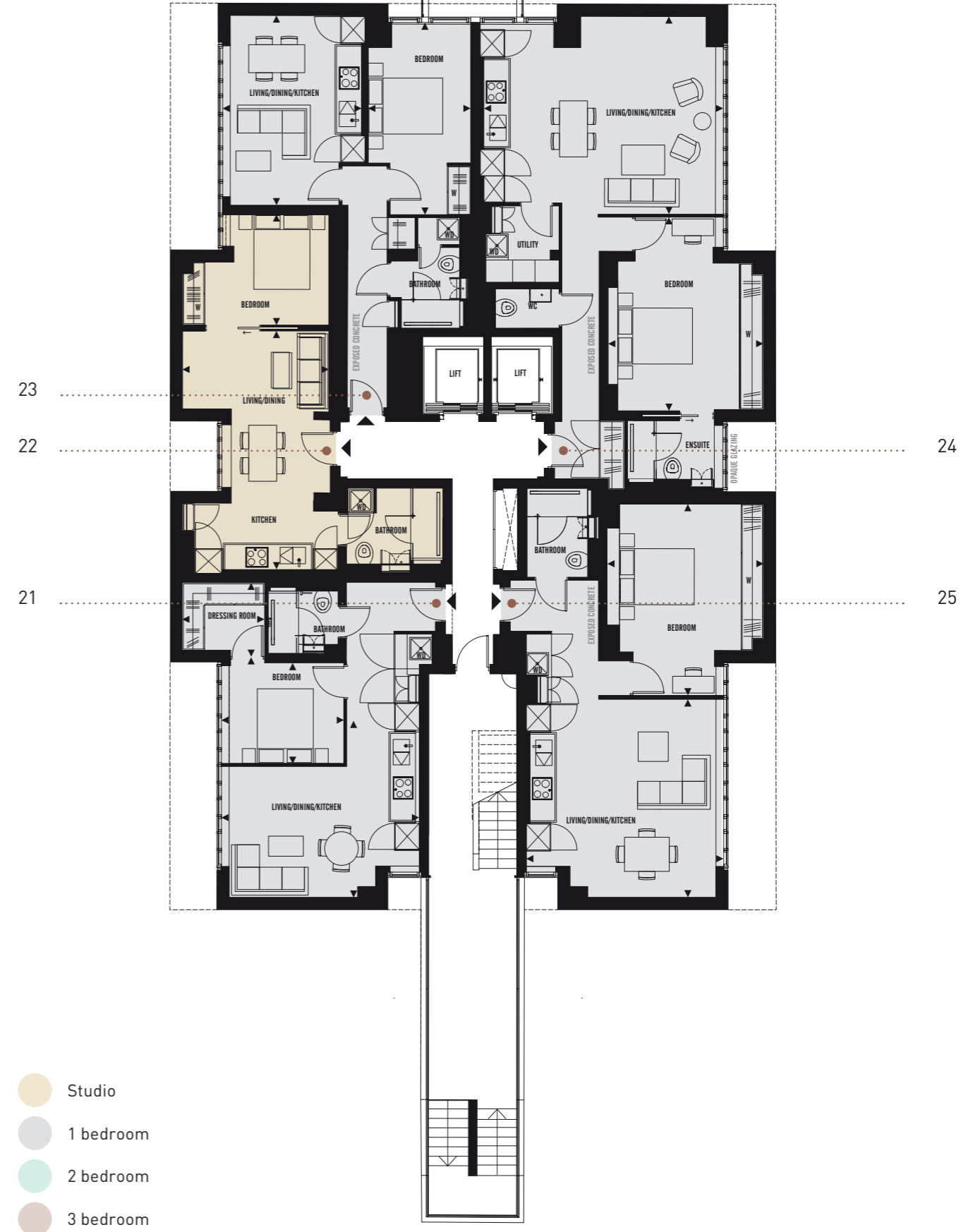
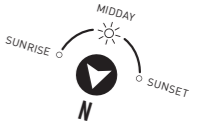
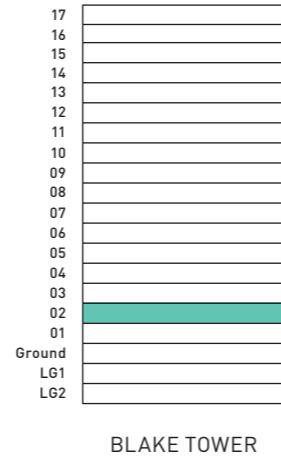
BEDROOM
5190mm x 3900mm | 17'0" x 12'9"

APARTMENT 25 **1 BEDROOM**

TOTAL AREA
60.5 sq m | 651.2 sq ft

LIVING/DINING/KITCHEN
5020mm x 5290mm | 16'5" x 17'4"

BEDROOM
5110mm x 4195mm | 16'9" x 13'9"



FLOOR: 03

APARTMENT 31 1 BEDROOM

TOTAL AREA
53.8 sq m | 579.1 sq ft

LIVING/DINING/KITCHEN
5220mm x 6310mm | 17'1" x 20'8"

BEDROOM
4830mm x 4290mm | 15'10" x 14'0"

DRESSING ROOM
2070mm x 2200mm | 6'9" x 7'3"

APARTMENT 32 SUITE

TOTAL AREA
44.6 sq m | 480.1 sq ft

LIVING/DINING/KITCHEN
6465mm x 3920mm | 21'2" x 12'10"

BEDROOM
2905mm x 3920mm | 9'6" x 12'10"

APARTMENT 33 1 BEDROOM

TOTAL AREA
51.6 sq m | 555.4 sq ft

LIVING/DINING/KITCHEN
5115mm x 4180mm | 16'9" x 15'9"

BEDROOM
5330mm x 2750mm | 17'5" x 9'0"

APARTMENT 34 2 BEDROOM

TOTAL AREA
81.8 sq m | 880.5 sq ft

LIVING/DINING/KITCHEN
6175mm x 4690mm | 20'3" x 15'4"

MASTER BEDROOM
5345mm x 2755mm | 17'6" x 9'0"

BEDROOM 2
5115mm x 2750mm | 16'9" x 9'0"

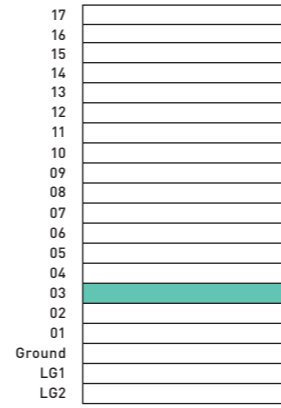
APARTMENT 35 2 BEDROOM

TOTAL AREA
71.8 sq m | 772.9 sq ft

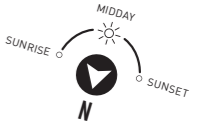
LIVING/DINING/KITCHEN
4910mm x 6325mm | 16'1" x 20'9"

MASTER BEDROOM
5055mm x 4350mm | 16'7" x 14'3"

BEDROOM 2
2695mm x 4310mm | 8'10" x 14'1"



BLAKE TOWER



FLOORS: 04-07

APARTMENTS 41, 51, 61, 71

1 BEDROOM

TOTAL AREA

53.8 sq m | 579.1 sq ft

LIVING/DINING/KITCHEN

5220mm x 6310mm | 17'1" x 20'8"

BEDROOM

4830mm x 4290mm | 15'10" x 14'0"

DRESSING ROOM

2070mm x 2200mm | 6'9" x 7'3"

APARTMENTS 42, 52, 62, 72

SUITE

TOTAL AREA

44.6 sq m | 480.1 sq ft

LIVING/DINING/KITCHEN

6465mm x 3920mm | 21'2" x 12'10"

BEDROOM

2905mm x 3920mm | 9'6" x 12'10"

APARTMENTS 43, 53, 63, 73

1 BEDROOM

TOTAL AREA

51.6 sq m | 555.4 sq ft

LIVING/DINING/KITCHEN

5115mm x 4180mm | 16'9" x 15'9"

BEDROOM

5330mm x 2750mm | 17'5" x 9'0"

APARTMENTS 44, 54, 64, 74

2 BEDROOM

TOTAL AREA

81.8 sq m | 880.5 sq ft

LIVING/DINING/KITCHEN

6175mm x 4690mm | 20'3" x 15'4"

MASTER BEDROOM

5345mm x 2755mm | 17'6" x 9'0"

BEDROOM 2

5115mm x 2750mm | 16'9" x 9'0"

APARTMENTS 45, 55, 65, 75

2 BEDROOM

TOTAL AREA

71.8 sq m | 772.9 sq ft

LIVING/DINING/KITCHEN

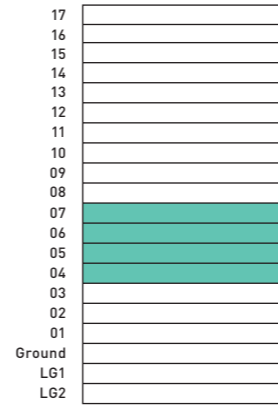
4910mm x 6325mm | 16'1" x 20'9"

MASTER BEDROOM

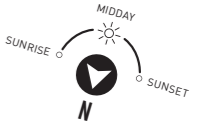
5055mm x 4350mm | 16'7" x 14'3"

BEDROOM 2

2695mm x 4310mm | 8'10" x 14'1"



BLAKE TOWER



43
53
63
73

42
52
62
72

41
51
61
71

44
54
64
74

45
55
65
75



- Studio
- 1 bedroom
- 2 bedroom
- 3 bedroom

FLOORS: 08-10, 12 & 13

APARTMENTS
81, 84, 91, 94, 101, 104,
121, 124, 131, 134 **1 BEDROOM**

TOTAL AREA
48.0 sq m | 516.7 sq ft

LIVING/DINING/KITCHEN
6205mm x 3980mm | 20'4" x 13'0"

BEDROOM
4125mm x 2755mm | 13'6" x 9'0"

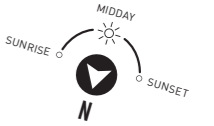
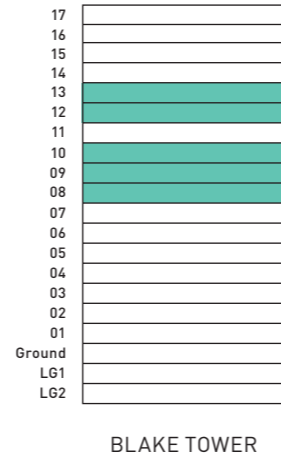
APARTMENTS
82, 83, 92, 93, 102, 103,
122, 123, 132, 133 **2 BEDROOM**

TOTAL AREA
108.0 sq m | 1162.5 sq ft

LIVING/DINING/KITCHEN
5290mm x 7640mm | 17'4" x 25'0"

MASTER BEDROOM
5110mm x 4140mm | 16'9" x 13'6"

BEDROOM 2
4180mm x 4140mm | 13'8" x 13'6"



- Studio
- 1 bedroom
- 2 bedroom
- 3 bedroom

FLOOR: 11

APARTMENTS
111, 114 **1 BEDROOM**

TOTAL AREA

49.7 sq m | 534.9 sq ft

LIVING/DINING/KITCHEN

5550mm x 5265mm | 18'2" x 17'3"

BEDROOM

2595mm x 5265mm | 8'6" x 17'3"

BALCONY

6225mm x 885mm | 20'5" x 2'10"

APARTMENTS
112, 113 **2 BEDROOM**

TOTAL AREA

92.9 sq m | 999.9 sq ft

LIVING/DINING/KITCHEN

5295mm x 6575mm | 17'4" x 21'6"

MASTER BEDROOM

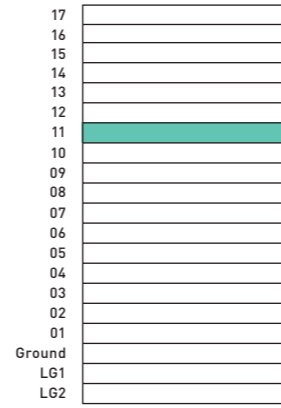
5215mm x 3070mm | 17'1" x 10'0"

BEDROOM 2

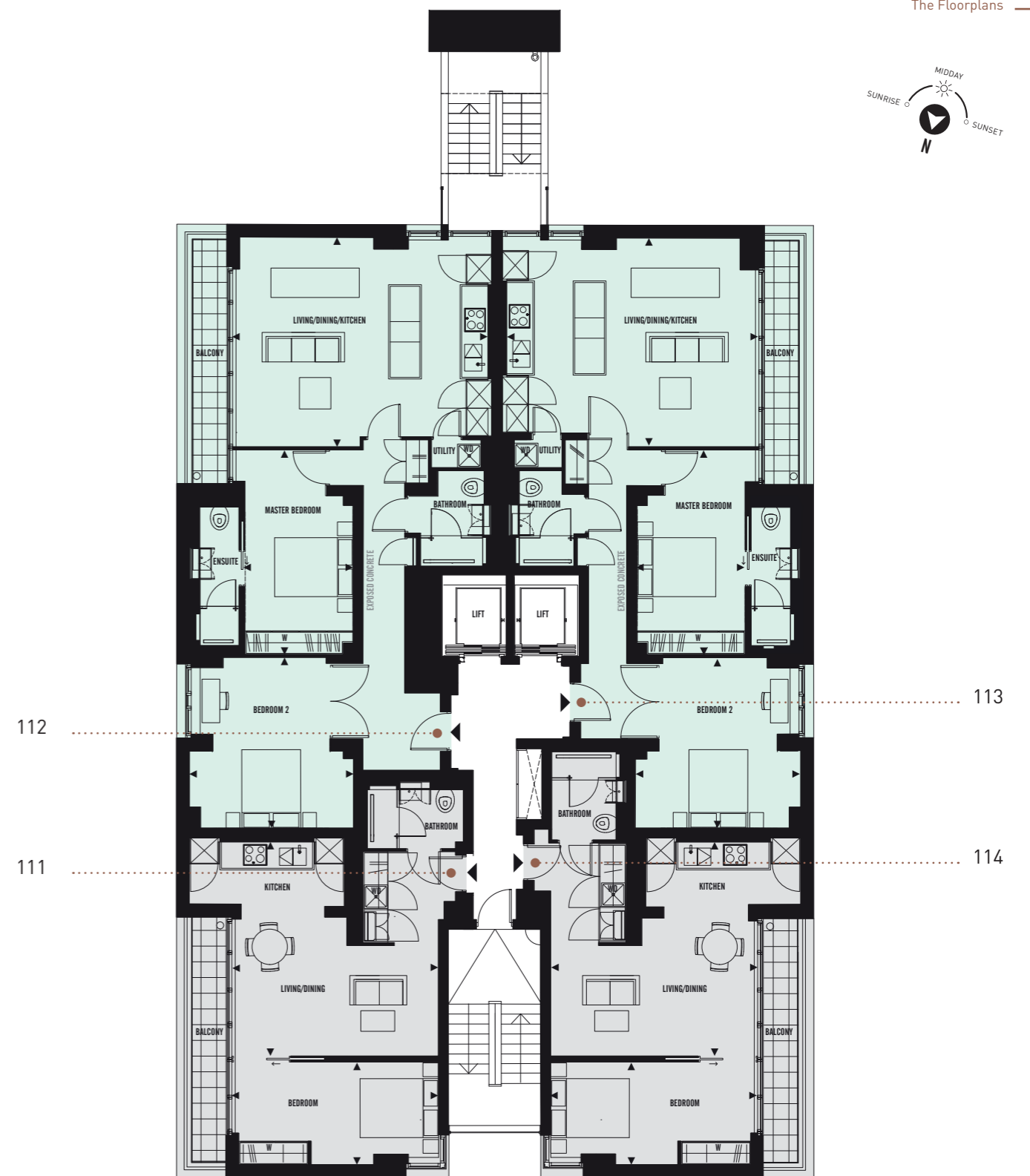
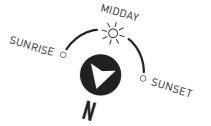
4315mm x 4205mm | 14'1" x 13'9"

BALCONY

6225mm x 885mm | 20'5" x 2'10"



BLAKE TOWER



- Studio
- 1 bedroom
- 2 bedroom
- 3 bedroom

FLOORS: 14-15

APARTMENTS 141, 151 1 BEDROOM

TOTAL AREA
71.9 sq m | 773.9 sq ft

LIVING/DINING/KITCHEN
5300mm x 6370mm | 17'4" x 20'10"

BEDROOM
4950mm x 4180mm | 16'2" x 13'8"

APARTMENTS 142, 152 3 BEDROOM

TOTAL AREA
102.2 sq m | 1100.1 sq ft

LIVING/DINING/KITCHEN
7970mm x 4215mm | 26'1" x 13'9"

MASTER BEDROOM
5985mm x 3275mm | 19'7" x 10'8"

BEDROOM 2
3980mm x 2755mm | 13'0" x 9'0"

BEDROOM 3
3620mm x 4215mm | 11'10" x 13'9"

APARTMENTS 143, 153 3 BEDROOM

TOTAL AREA
136.5 sq m | 1469.3 sq ft

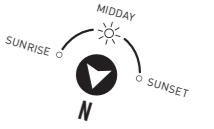
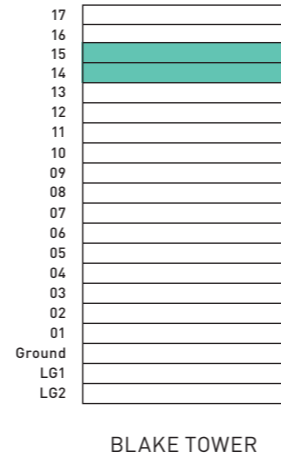
LIVING/DINING
6205mm x 6325mm | 20'4" x 20'9"

KITCHEN
2705mm x 4205mm | 8'10" x 13'9"

MASTER BEDROOM
4215mm x 5430mm | 13'9" x 17'9"

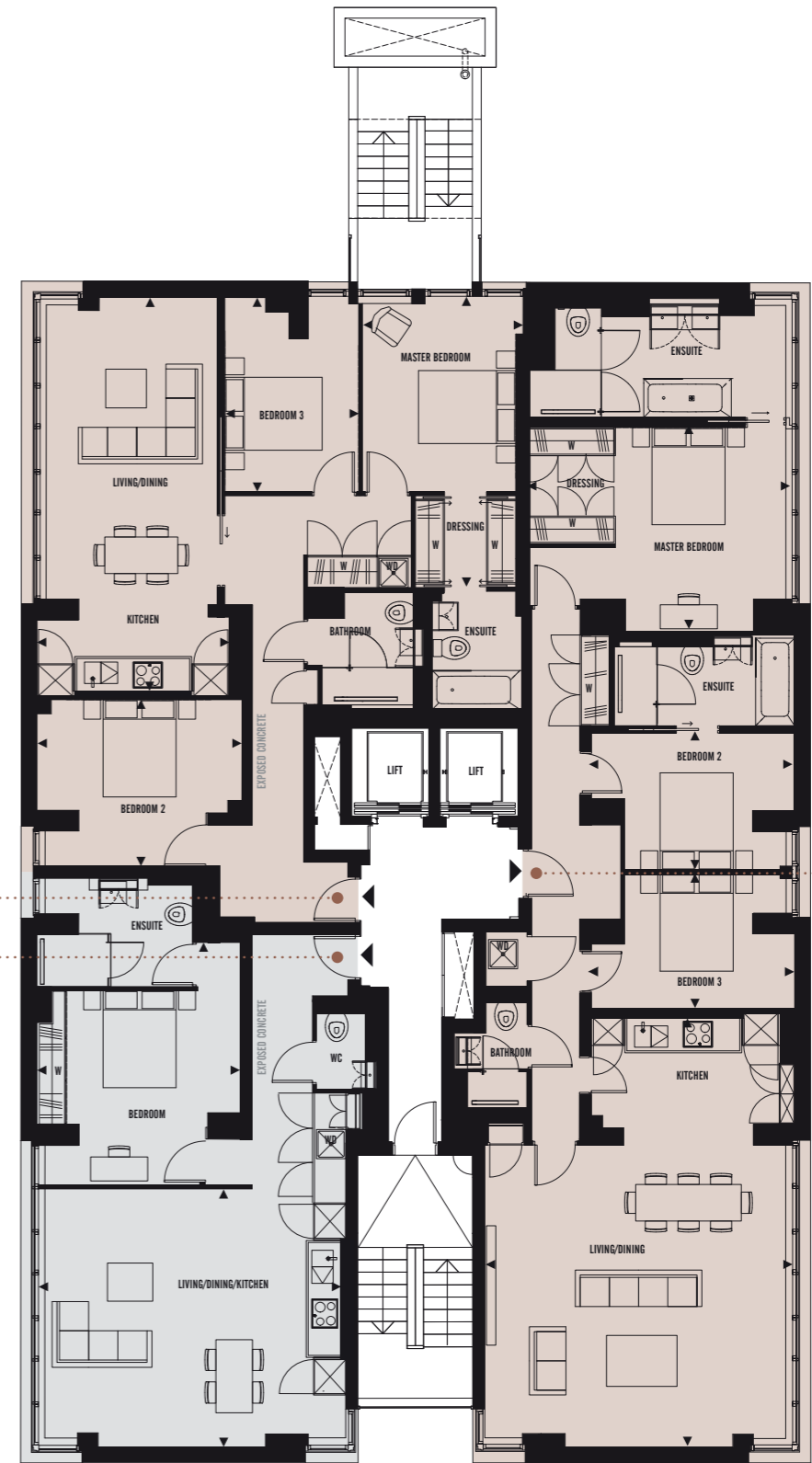
BEDROOM 2
2805mm x 4200mm | 9'2" x 13'9"

BEDROOM 3
2755mm x 4195mm | 9'0" x 13'9"



142
152
141
151

143
153



- Studio
- 1 bedroom
- 2 bedroom
- 3 bedroom

CONTACT US.

Blake Tower
2 Fann Street,
London
EC2Y 8BR

020 3538 1539
blaketower@redrow.co.uk
blaketower.com

Redrow
1st Floor Unex Tower
7 Station Street
London E15 1AZ

020 8536 5120
london.sales@redrow.co.uk
redrow.co.uk/london



OUR PARTNERS

CONRAN+ PARTNERS

The information contained in this and any accompanying documents is provided for general guidelines only and does not form the whole or any part of any offer, contract or warranty. These particulars should not be relied upon as accurately describing any of the specific matters described by any order under the Consumer Protection from Unfair Trading Regulations 2008. Customers are strongly advised to contact a Redrow Homes representative for further details and to satisfy themselves as to their accuracy. All areas and dimensions have been taken from architects plans prior to construction therefore whilst the information is believed to be correct its accuracy cannot be guaranteed and does not form part of any contract. They are not intended to be used for carpet sizes, appliance sizes or items of furniture. Purchasers must therefore rely on their own inspection to verify any information provided. All dimensions are within + or - 50mm. Your attention is drawn to the fact that it may not be possible to obtain the products as referred to in the specification. In such cases a similar alternative will be provided and Redrow Homes reserve the right to make these changes as required. Images are representative only; maps are not to scale and show approximate locations only. Computer generated images, floorplans and room layouts are indicative only, based on information correct at time of going to print and may therefore be subject to review and optimisation. Timings, unless stated otherwise, are taken from Transport for London 2015. Blake Tower is a marketing name and will not necessarily form part of the approved postal address.



